

# CABINETS & CONNECTIVITY

by *Securi-Flex*





***Securi-Flex***<sup>®</sup>

Creating Connections | Powering Possibilities

# INTRODUCTION

Founded in 1998, and with over 25 years of experience, Securi-Flex® has grown to become a leading supplier of specialist cables and accessories across the United Kingdom and Ireland.

Throughout Securi-Flex's® history, our focus has been on quality, depth of range, and best in class service, ensuring we meet the needs and requirements of our customers.

Our channel to market is and has always been the electrical wholesale and security industry, supporting and servicing National Wholesalers, Buying Groups, Independent Wholesalers and Specialist Security Distributors across the United Kingdom and Ireland.

Our main objective is to ensure our customers have a seamless customer experience when partnering with Securi-Flex®.

The Securi-Flex® Cabinets and Connectivity range is designed with features to protect against unauthorised access, environmental threats, and potential breaches.

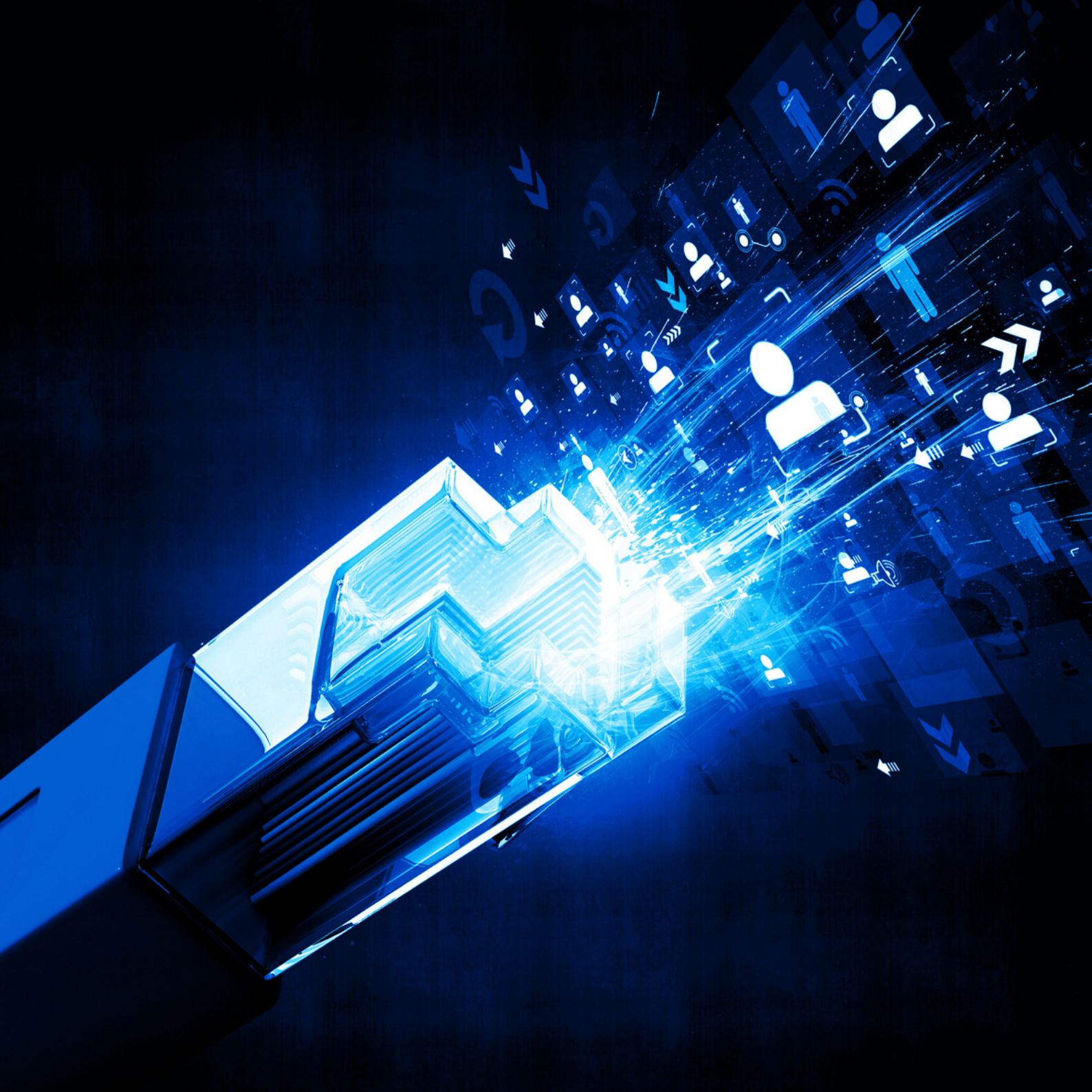
Whether you are a small business, a corporate enterprise, or a data centre, Securi-Flex® ensures that your data remains secure, compliant, and accessible when needed.

Securi-Flex® offers a diverse array of connectivity solutions that are reliable, efficient, and fully accredited.

From high-speed data cables to advanced network infrastructure components, our Connectivity range ensures that your systems stay connected with minimal downtime.

So if you are looking for a safe, reliable and efficient solution, look no further than our Cabinets and Connectivity range.







# Contents

## What is Structured Cabling? 05

---

### Data Cabinets

Wall Mounted 450mm 07

Wall Mounted 560mm 09

---

### Cabinet Accessories

Cable Management & Cage Nuts 11

Ventilation and Dust Management 12

Shelving & PDU Units 13

---

### Connectivity Equipment

Patch Panels 16

Modules 19

Couplers 20

RJ45 Crimps 21

Connections 23

Strain Relief Boots 24

Cable Ties 25

Faceplates 26

Blanks 27

---

# Contents Continued

## Data Cables

Category 5e FTP	30
Category 5e UTP	31
Category 5e SWA, DB & Multicore	32
Category 6 FTP	33
Category 6 UTP	34
Category 6a U/FTP & F/FTP	35
Category 7a	36
Category 8.1	37

---

## Tools

Punch Down	40
Cyclops Stripping	40
Crimping Tools	41
Cable Cutters	42
Cable Tie Guns	43

# WHAT IS STRUCTURED CABLING?

Structured cabling refers to the standardised system of cabling and connectivity products, which are designed to support various telecommunications within a building or office environment. It provides an organised approach to designing, installing, and managing a network infrastructure.

## Key components of structured cabling include:

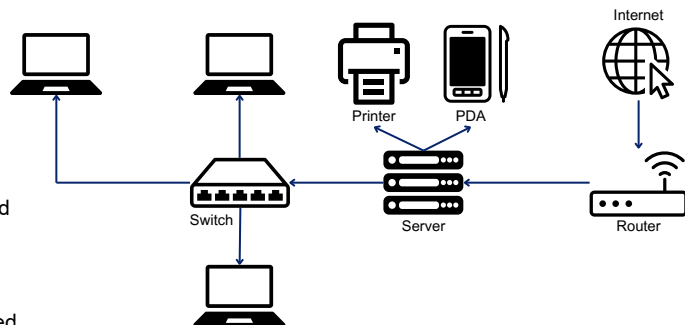
- **Cabling:** This includes copper cabling (such as twisted pair data cables) and fibre optic cables. These cables are used to transmit data, voice, and video signals throughout the network.
- **Connectivity Products:** These are the connectors, outlets, patch panels, and other hardware components used to terminate and connect the cables, ensuring reliable transmission of signals.
- **Cable Pathways:** Cable pathways, such as conduits, cable trays, and raceways, are used to route and protect the cables throughout the building infrastructure.
- **Cable Management:** Cable management solutions help organise and secure cables, minimising the risk of damage and making it easier to identify and troubleshoot issues.

Structured cabling systems are typically designed and installed according to industry standards, such as those outlined by the Telecommunications Industry Association (TIA) and the International Organisation for Standardisation (ISO). These standards ensure interoperability, scalability, and performance consistency across different network environments.

## Benefits of structured cabling include:

- **Flexibility:** Structured cabling supports a wide range of applications and can accommodate future technology upgrades and expansions.
- **Reliability:** Properly designed and installed structured cabling systems offer high levels of reliability and performance, minimising downtime and disruptions to network operations.
- **Ease of management:** The organised and standardised nature of structured cabling makes it easier to manage and maintain the network infrastructure, reducing the time and effort required for troubleshooting and administration.
- **Cost-effectiveness:** While the initial investment in structured cabling may be higher than ad-hoc cabling solutions, the long term benefits in terms of scalability, reliability, and ease of maintenance often result in cost savings over time.

## Example Network Diagram

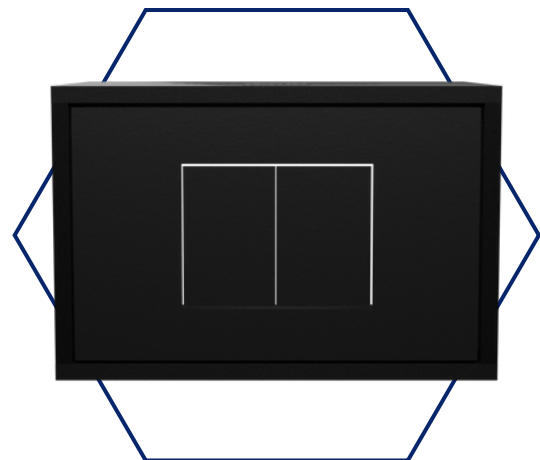
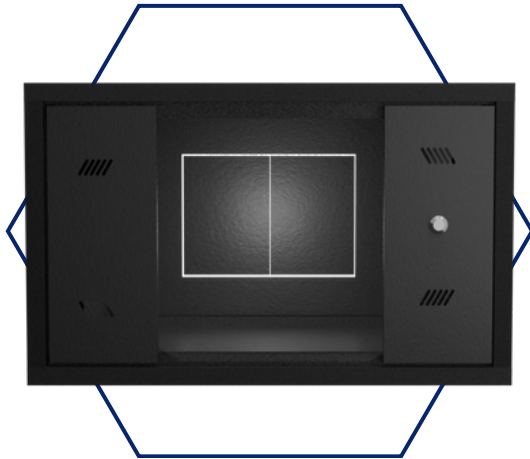


**Overall, structured cabling provides a robust foundation for building a reliable and efficient network infrastructure, supporting the communication needs of businesses and organisations of all sizes.**



# DATA CABINETS

## WALL MOUNTED CABINETS



# WALL CABINETS - 450mm

**DESCRIPTION:** 6U Data Wall Cabinet  
**SIZE:** 600mm x 450mm deep  
**WEIGHT:** 15.4kg  
**PART CODE:** SFX/ACC-WC-6U-600X450

---

**DESCRIPTION:** 9U Data Wall Cabinet  
**SIZE:** 600mm x 450mm deep  
**WEIGHT:** 19.4kg  
**PART CODE:** SFX/ACC-WC-9U-600X450

---

**DESCRIPTION:** 12U Data Wall Cabinet  
**SIZE:** 600mm x 450mm deep  
**WEIGHT:** 21.8kg  
**PART CODE:** SFX/ACC-WC-12U-600X450

---

**DESCRIPTION:** 15U Data Wall Cabinet  
**SIZE:** 600mm x 450mm deep  
**WEIGHT:** 24.8kg  
**PART CODE:** SFX/ACC-WC-15U-600X450

---

**DESCRIPTION:** 18U Data Wall Cabinet  
**SIZE:** 600mm x 450mm deep  
**WEIGHT:** 28.2kg  
**PART CODE:** SFX/ACC-WC-18U-600X450



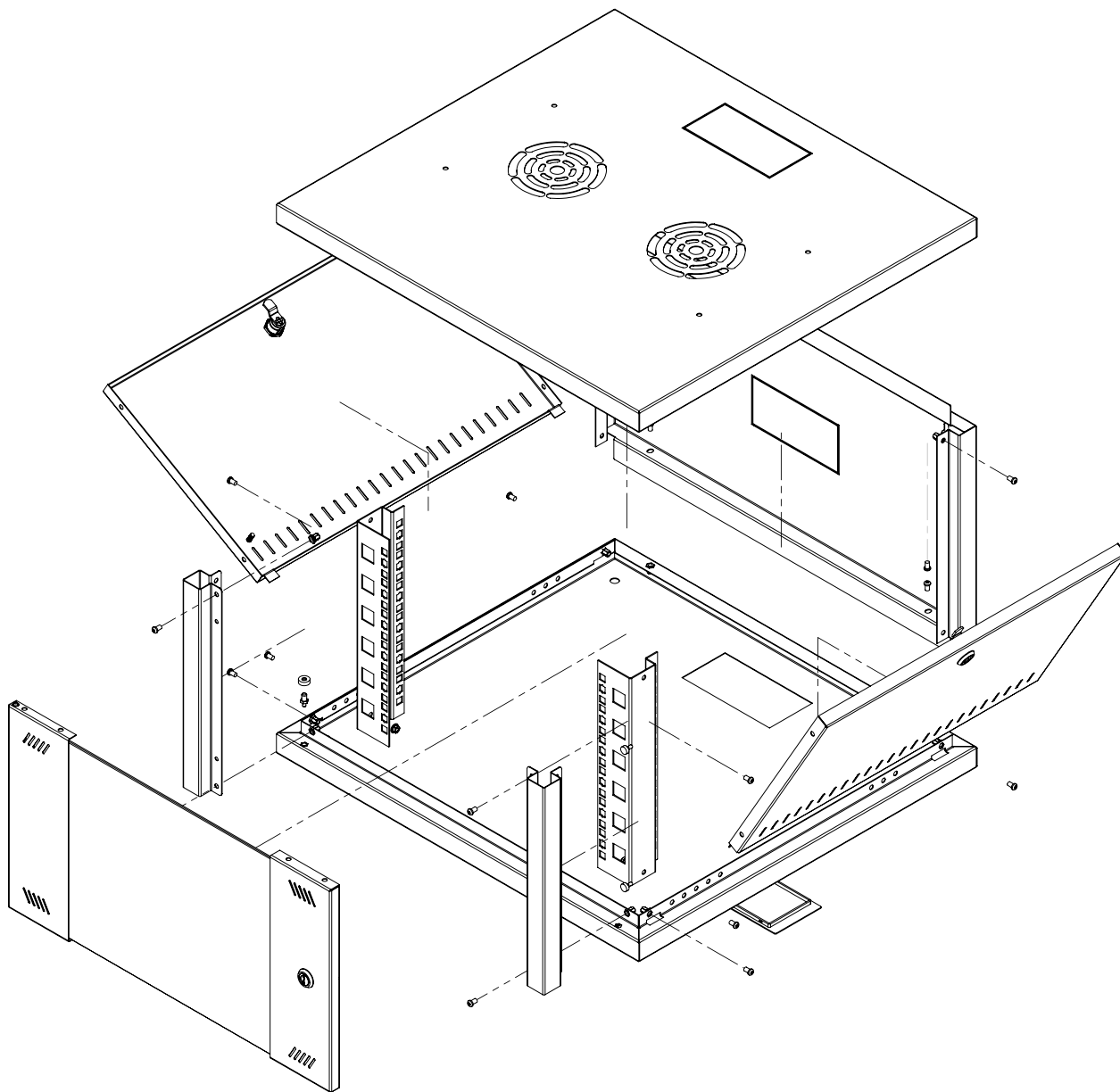
Our range of wall mounted data cabinets boast a compact & robust build with plenty of space for accessories and rackmount equipment.

Available in both 450mm & 560mm depths.

Their lightweight design supports ease of installation and handling on site.

## FEATURES

- Supplied fully assembled
- Framed and vented lockable glass door
- Quick release and reversible front door
- Lockable and removable side panels
- Two sets of adjustable 19" profiles with cable management
- 360° access to support access and cable routing
- Twin fan entry on top panel
- Powder coat Black RAL 9005 finish
- Supplied with nuts, bolts, and earthing kit
- Pre-cut mounting holes to enable one man installation
- Knockout cable entry





# WALL CABINETS - 560mm

**DESCRIPTION:** 6U Data Wall Cabinet  
**SIZE:** 600mm x 560mm deep  
**WEIGHT:** 15.4kg  
**PART CODE:** SFX/ACC-WC-6U-600X560

---

**DESCRIPTION:** 9U Data Wall Cabinet  
**SIZE:** 600mm x 560mm deep  
**WEIGHT:** 21kg  
**PART CODE:** SFX/ACC-WC-9U-600X560

---

**DESCRIPTION:** 12U Data Wall Cabinet  
**SIZE:** 600mm x 560mm deep  
**WEIGHT:** 24.4kg  
**PART CODE:** SFX/ACC-WC-12U-600X560

---

**DESCRIPTION:** 15U Data Wall Cabinet  
**SIZE:** 600mm x 560mm deep  
**WEIGHT:** 27.8kg  
**PART CODE:** SFX/ACC-WC-15U-600X560

---

**DESCRIPTION:** 18U Data Wall Cabinet  
**SIZE:** 600mm x 560mm deep  
**WEIGHT:** 31.2kg  
**PART CODE:** SFX/ACC-WC-18U-600X560



Our range of wall mounted data cabinets boast a compact & robust build with plenty of space for accessories and rackmount equipment.

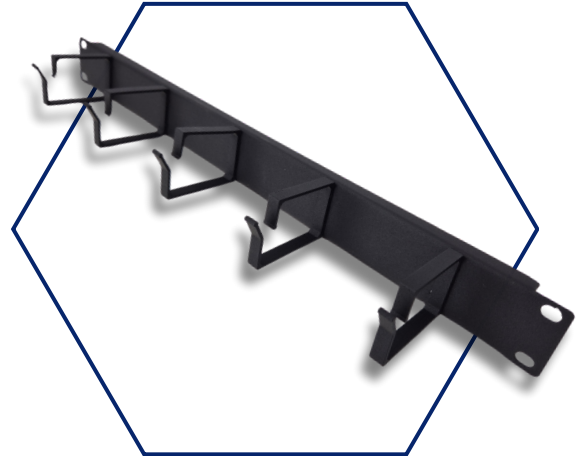
Available in both 450mm & 560mm depths.

Their lightweight design supports ease of installation and handling on site.

## FEATURES

- Supplied fully assembled
- Framed and vented lockable glass door
- Quick release and reversible front door
- Lockable and removable side panels
- Two sets of adjustable 19" profiles with cable management
- 360° access to support access and cable routing
- Twin fan entry on top panel
- Powder coat Black RAL 9005 finish
- Supplied with nuts, bolts, and earthing kit
- Pre-cut mounting holes to enable one man installation
- Knockout cable entry

# CABINET ACCESSORIES



# CABLE MANAGEMENT & CAGE NUTS

## Cable Management Bar

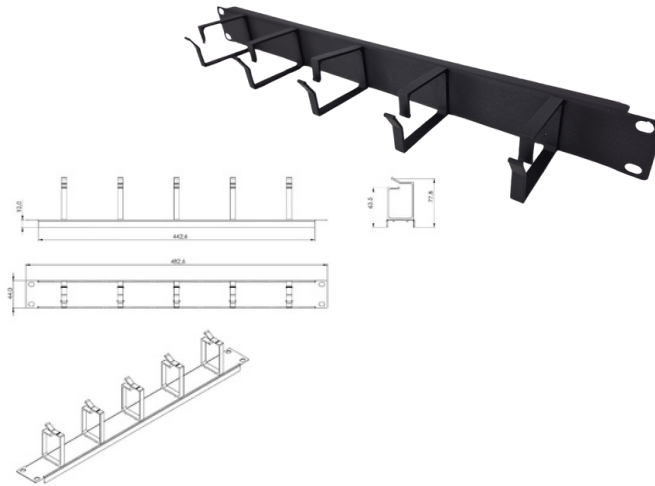
Our 19" Cable Management Bar is engineered to effortlessly mount on all 19" data cabinets and server racks, providing a streamlined solution for cable organisation. With vertical cable rings designed to create optimal bend radius for cables, this accessory significantly aids in maintaining a tidy rack appearance.

**DESCRIPTION:** 1U Cable Management Bar Black

**PART CODE:** SFX/ACC-WC-CABMANGEBAR-1U

### FEATURES

- 5 x metal hoops for cable management
- All metal construction
- Designed to give extra support for patch leads
- Standard 19" design suitable for all cabinets
- Powder coat Black RAL 9005 finish
- Dimensions: L 483mm x D 44mm x H 78mm



## Cage Nuts, Washers and Bolts

Cage nuts, washers, and bolts in M6 size, designed for securely mounting various equipment within your data rack or server cabinet.

**DESCRIPTION:** Cage nuts with washers, and bolts

**PART CODE:** SFX/ACC-WC-CN

### FEATURES

- Used to fit equipment to 19" mounting profiles
- M6 X 12mm screws
- Supplied in packs of 50





# VENTILATION & DUST MANAGEMENT

## Cabinet Dust Brush Plate

This cabinet dust brush is a tool designed to prevent build up of dust from inside server racks or data cabinets. It features soft bristles, maintaining optimal airflow and preventing equipment damage.

**DESCRIPTION:** Cabinet Dust Insert Plate

**PART CODE:** SFX/ACC-WC-DB

### FEATURES

- 1U 19-inch rackmount insert plate
- 10mm thick plastic
- Dimensions: 145mm x 10mm x 90mm
- Powder coat Black RAL 9005 finish
- Dust preventative
- Supports additional airflow
- Can be fitted retrospectively



## 2-Way Fan Unit

Our 2-Way Fan Unit provides instant cooling action to your data cabinet. This slimline 1U cooling fan can fit into any of our Data Cabinets, improving airflow and reducing core temperatures effectively.

**DESCRIPTION:** Rack Misc Fan Tray - 2 x Fans

**PART CODE:** SFX/ACC-WC-F-UNIT-2

### FEATURES

- 2-way fan unit
- Suitable for 19" cabinets
- Slim 1U design
- Dimensions: 199mm x 469mm x 43mm
- Powder coat Black RAL 9005 finish
- Easy access and maintenance
- Reduced noise output
- Built-in mechanical thermostat
- 2-way switch
- Pre-wired ready for installation
- 230V A.C. mains



# SHELVING & PDU UNITS

## Cabinet Shelves

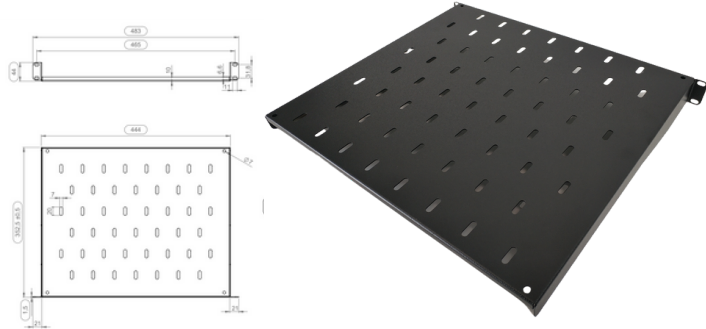
These additional Cabinet Shelves are designed to fit our full Data Cabinet range, providing a robust base for your equipment.

**DESCRIPTION:** Cabinet Shelf

**PART CODES:** SFX/ACC-WC-S-1U-350-1  
SFX/ACC-WC-S-1U-400-1

### FEATURES

- Suitable for 450mm and 560mm deep wall cabinets
- 1.2mm cool rolled steel
- Powder coat Black RAL 9005 finish
- Adjustable mounting distance
- Dimensions: 350mm - 483mm x 353mm x 44mm  
400mm - 483mm x 402mm x 44mm
- Fixed by square nut
- Installing position: level fixed on the mounting rail



## PDU Unit

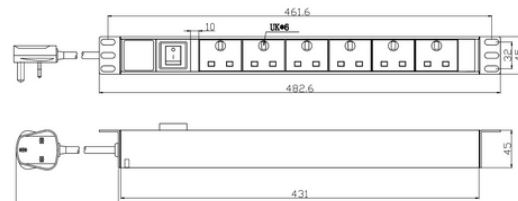
This horizontal rackmount surge-protected and filtered power distribution unit (PDU) accommodates 6 outlets, catering to 19" wall mount cabinets. Equipped with UK power sockets featuring surge and EMI filter protection.

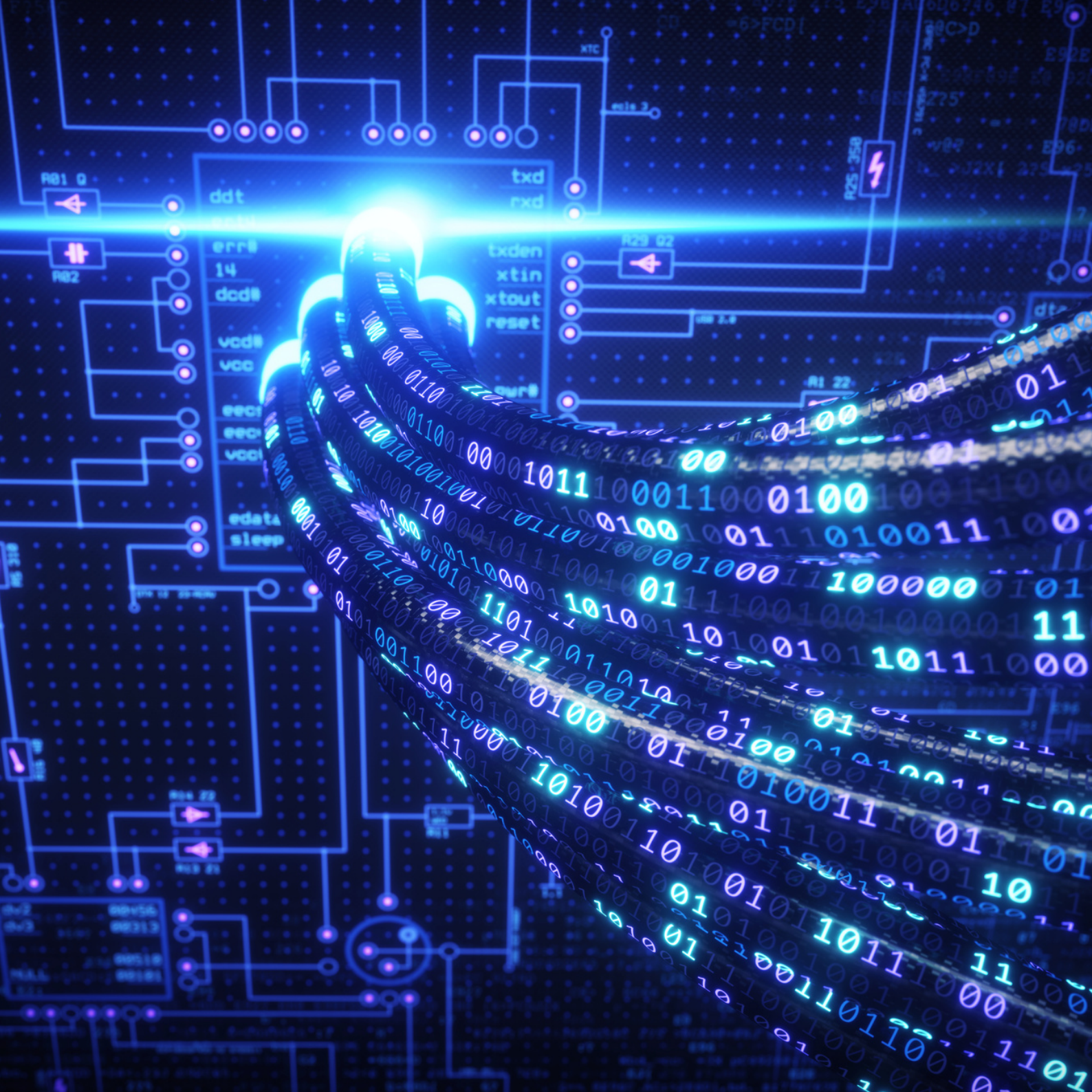
**DESCRIPTION:** Cabinet 6 Way PDU Unit

**PART CODE:** SFX/ACC-WC-PDU-6-H-1

### FEATURES

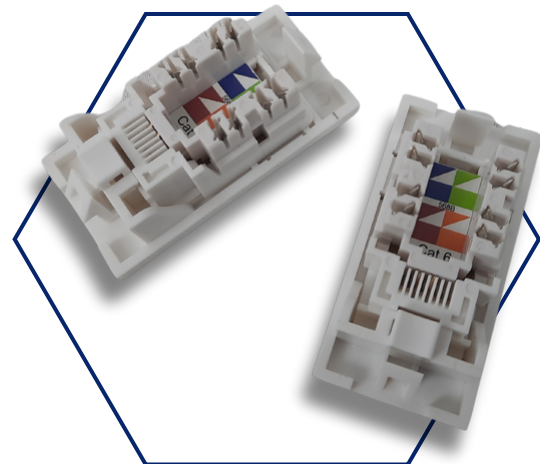
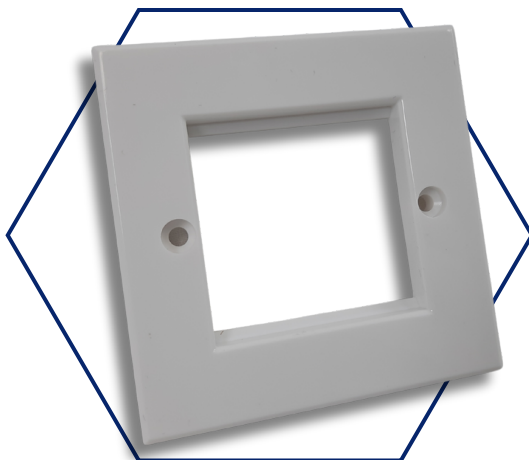
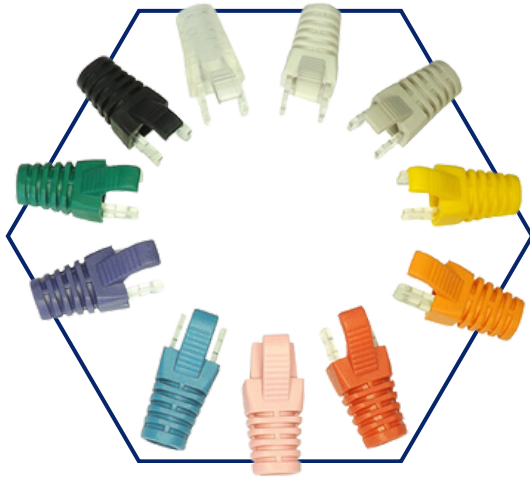
- Quality, reliability, and a low cost solution for enclosure
- Horizontal rack mount (brackets supplied)
- Fitted with UK power sockets for your powered devices
- Fitted UK power plug with 13a BSI fuse
- Dimensions: 483mm x 45mm x 45mm
- 4 way option available upon request







# CONNECTIVITY EQUIPMENT



# PATCH PANELS

## Cat5e Patch Panel - Unshielded

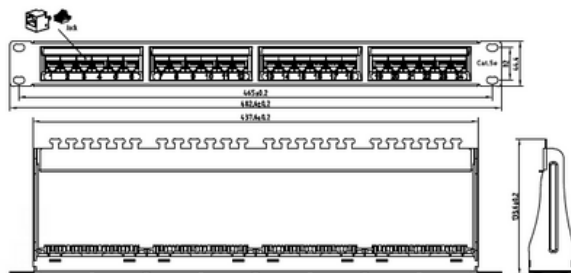
Our Cat5e patch panels adhere to the latest standards for enhanced Category 5e. Engineered for swift deployment and optimal connection durability, these patch panels offer a variety of labelling options. Each panel provides writable labelling fields, ensuring comprehensive labelling as needed.

**DESCRIPTION:** Cat5e Patch Panel 180D 50u" gold over nickel plating black

**PART CODE:** SFX/ACC-WC-PP-C5-24-1U

### FEATURES

- 24 Port Patch Panel
- Suitable for 450mm and 560mm deep wall cabinets
- Suitable for gigabit ethernet applications
- 1.2mm cool rolled steel
- Powder coat Black RAL 9005 finish
- TIA/EIA Category 5 standard compatible
- Fixed by square nut
- Easy to use and install, featuring slide in labels and colour coded rear utilities
- Dimensions: 482mm x 134mm x 44mm





# PATCH PANELS

## Cat6 Patch Panel - Unshielded

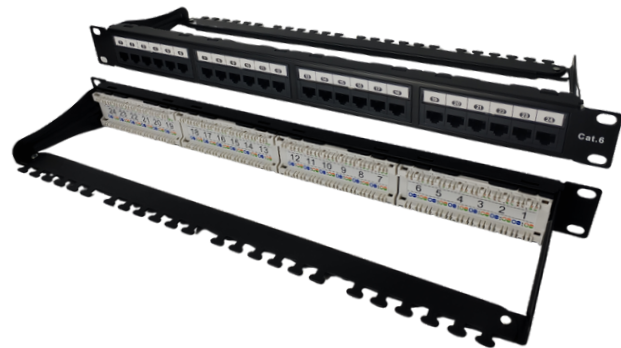
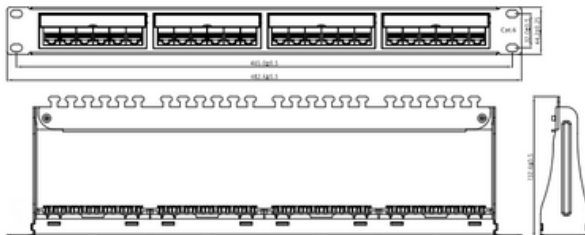
Our Category 6 patch panels deliver the necessary performance for current and future data communication networks and applications, including Gigabit Ethernet. Available in 12, 24, and 48 Port options.

**DESCRIPTION:** Cat6 Patch Panel 1U 180D 50u" gold over nickel plating black

**PART CODES:** SFX/ACC-WC-PP-C6-12-1U  
SFX/ACC-WC-PP-C6-24-1U  
SFX/ACC-WC-PP-C6-48-1U

### FEATURES

- 12, 24, and 48 Port Patch Panel options available
- Suitable for 450mm and 560mm deep wall cabinets
- Suitable for gigabit ethernet applications
- 1.2mm cool rolled steel
- Powder coat Black RAL 9005 finish
- TIA/EIA Category 6 standard compatible
- Fixed by square nut
- Easy to use and install, featuring slide in labels and colour coded rear utilities
- Dimensions: 482mm x 133mm x 44mm



# PATCH PANELS

## Cat6a Patch Panel - Shielded

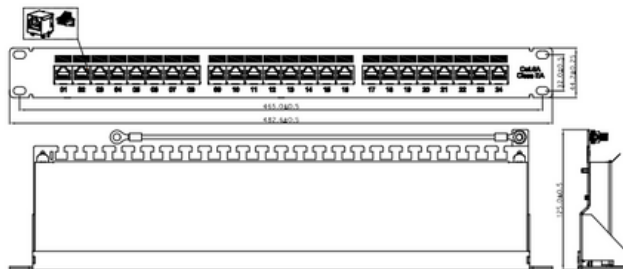
Our Category 6a patch panels deliver the necessary performance for current and future data communication networks and applications, including Gigabit Ethernet.

**DESCRIPTION:** Cat6a FTP Patch Panel 1U 90D 50u" gold over nickel plating

**PART CODE:** SFX/ACC-WC-PP-C6A-24-1U

### FEATURES

- 24 Port Patch Panel
- Suitable for 450mm and 560mm deep wall cabinets
- Suitable for gigabit ethernet applications
- Fully shielded
- 1.2mm cool rolled steel
- TIA/EIA Category 6a standard compatible
- Powder coat Black RAL 9005 finish
- Fixed by square nut
- Dimensions: 483mm x 125mm x 44mm



# MODULES

Our Modules are crafted to offer one of the most space-saving wall outlet solutions available. Perfect for scenarios where back-box depth presents a challenge, these modules offer an optimal solution. These compact modules seamlessly integrate into single or dual gang Euro faceplates, providing versatility for various setups. Our Cat6 Modules are also backward compatible to Cat5e.

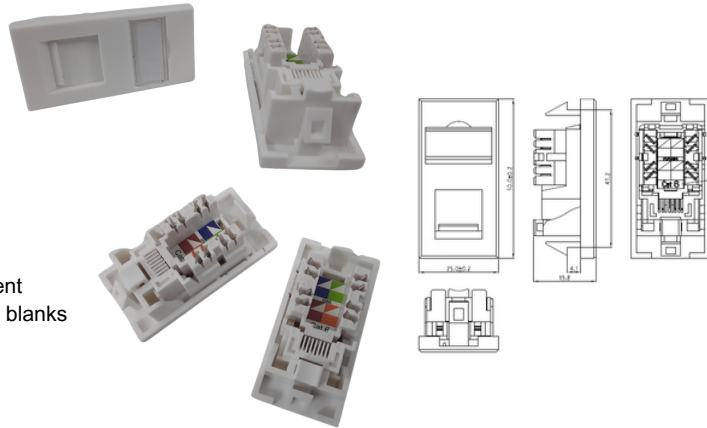
## Cat6 Euro Module - Unshielded

**DESCRIPTION:** Cat6 UTP Euro Module

**PART CODE:** SFX/ACC-C6-MOD-UTP

### FEATURES

- Backwards compatible to Cat5e
- Suitable for gigabit ethernet applications
- Shallow design minimises back-box depth requirement
- Interchangeable with all other Euro modules and 1/4 blanks
- Fits all standard Euro faceplates
- Dimensions: 50mm x 25mm



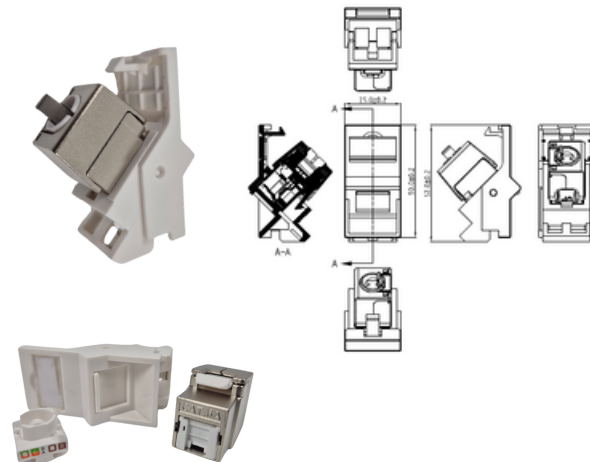
## Cat6a Angled Module - Shielded

**DESCRIPTION:** Cat6a FTP Angled Shielded Keystone & Module

**PART CODE:** SFX/ACC-C6A-MOD-FTP

### FEATURES

- Achieves Cat6a performance
- Compatible with 10-Gigabit ethernet
- Interchangeable with other Euro Modules and blanks
- Offers a user-friendly shield connection
- Dimensions: 50mm x 25mm



# COUPLERS

Couplers are devices used to connect two Ethernet cables while maintaining their respective performance standards. Cat5e couplers support Category 5e cables transmitting at speeds up to 1 Gbps. Couplers are commonly used to extend or join network cables in various applications.

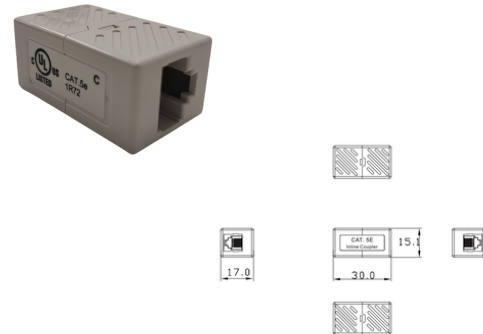
## Cat5e Through Coupler

**DESCRIPTION:** RJ45 Coupler for Cat5e

**PART CODE:** SFX/ACC-RJ45-C5-CPL

### FEATURES

- Ideal for extending existing cabling installations
- Maintains Category 5e performance with straight through connection
- For use with Cat5e RJ45 crimp plugs
- Simple to use and install
- Dimensions: 30mm x 17mm



IDC Cat6 Inline Connection Boxes offer an efficient solution for resolving connection issues commonly encountered in installations. They are also utilised for extending cable runs to new locations when necessary.

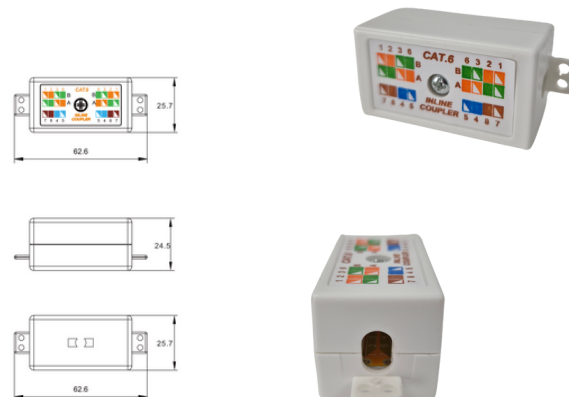
## Cat6 IDC Inline Connection Box

**DESCRIPTION:** IDC Inline Connection Box for Cat6

**PART CODE:** SFX/ACC-RJ45-C6-CPL

### FEATURES

- Ideal for extending existing cabling installations
- Maintains Category 6 performance
- Colour coded
- Dimensions: 63mm x 26mm



# RJ45 CRIMPS

RJ45 crimps, also known as RJ45 connectors or modular plugs, are components used for terminating Ethernet cables. They are designed to attach to the ends of twisted pair cables, typically Cat5e, Cat6, or Cat6a cables, and are commonly used in networking and telecommunications. RJ45 crimps consist of a plastic housing that holds the wires in place and metal contacts that make electrical connections with the wires. They are used to create custom-length Ethernet cables or to repair damaged connectors on existing cables. RJ45 crimps are often terminated using a crimping tool to secure the wires in place and ensure a reliable connection.

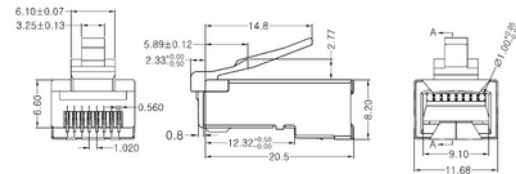
## Cat5e - Unshielded

**DESCRIPTION:** RJ45 Unshielded Crimps for Cat5e

**PART CODE:** SFX/ACC-RJ45-C5

### FEATURES

- Suitable for stranded patch and solid core terminations
- Single piece construction
- Cat5e performance
- Dimensions: 22mm x 20mm x 12mm



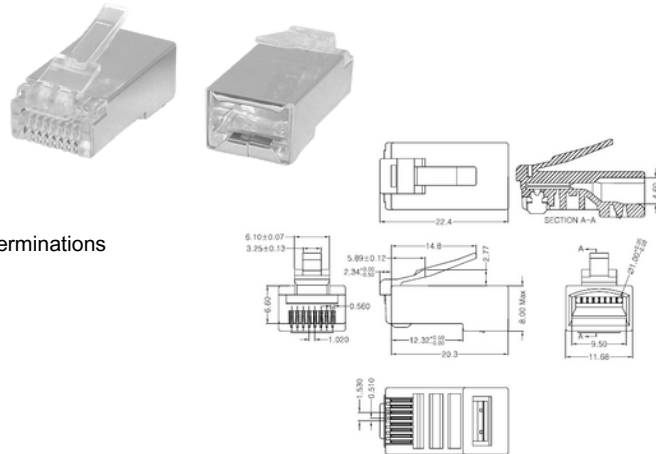
## Cat5e - Shielded

**DESCRIPTION:** RJ45 Shielded Crimps for Cat5e

**PART CODE:** SFX/ACC-RJ45-C5-SCR

### FEATURES

- Suitable for stranded patch terminations and solid core terminations
- Single piece construction
- Cat5e performance
- EMI resistant
- Dimensions: 22mm x 20mm x 12mm







# CONNECTIONS

Cat8.1 Termination Plugs and Shielded Keystone Sockets are used to terminate Cat8.1 Ethernet Cables. These connections are specifically designed to meet the specifications of Category 8.1 cables, which require high performance and support extremely high data transmission speeds.

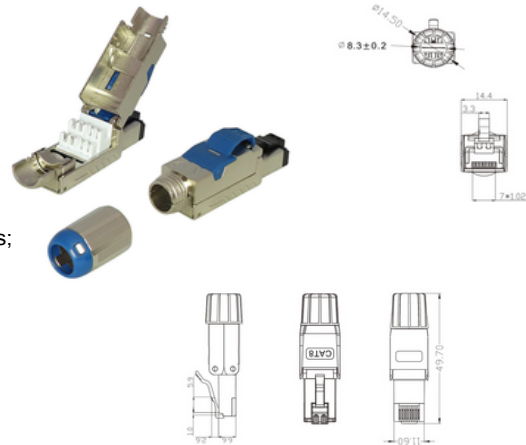
## Cat8.1 Termination Plug - Shielded

**DESCRIPTION:** Cat8.1 Field Termination Plug

**PART CODE:** SFX/ACC-PLUG-C8.1-SHLD

### FEATURES

- Suitable for use with a wide range of cable diameter and core sizes; 7.0-8.5mm cable OD, 23-26 AWG cores
- Requires no special tools for installation
- Robust, fully shielded Cat8 plug with zinc alloy housing offering quick and reliable termination
- Compatible with solid and stranded cables
- Dimensions: 66mm x 14mm x 18mm



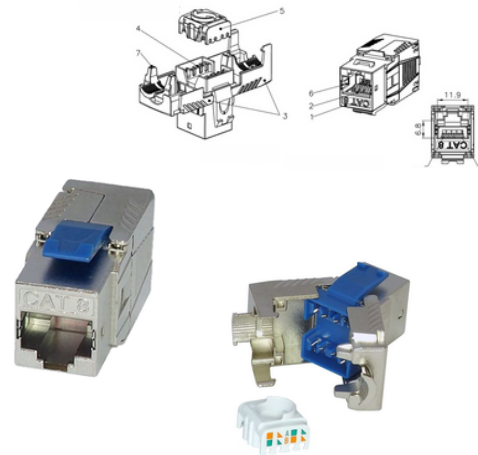
## Cat 8.1 Keystone Socket - Shielded

**DESCRIPTION:** Category 8 Shielded Keystone Socket

**PART CODE:** SFX/ACC-C8.1-JACK-KEYST-SHLD

### FEATURES

- Transmission performance in compliance with the ANSI/TIA 568-C.2-1 specifications for Category 8 cabling systems (i. e. suitable for runs of 5 – 30 metres)
- Compliant with IEC60512-99-001 – suitable for use with IEEE 802.3at (PoE+) applications
- Provides quick and easy tool-less lever “butterfly style” termination
- Suitable for 0.51 – 0.65 mm/ 22 – 24 AWG stranded and solid wire
- Compatible with a wide range of panels, adaptors and faceplates
- Dimensions: 42mm x 22mm x 16mm



# STRAIN RELIEF BOOTS

RJ45 Strain Relief Boots are essential for assembling a new patch cable. These boots safeguard the modular plug body, particularly the latch tab, from potential damage during handling. Additionally, the strain relief characteristics of the boots help preserve the cable's bend radius and prevent conductor displacement within the connector, which could result in continuity issues over time.

## Cat5e Strain Relief Boots

**DESCRIPTION:** Cat5e Strain Relief Boots

**PART CODE:** SFX/ACC-SRB-C5

### FEATURES

- Guards against broken connector tabs and snagging
- Reduces cable bends to maintain data speed and prevent data loss
- Dampens cable movement and vibrations
- Compatible with industry standard RJ45 connectors
- Designed for Cat5e twisted pair cables
- Suitable for Cat5e overall diameter: 5.0mm - 5.8mm
- Colour options to match cable



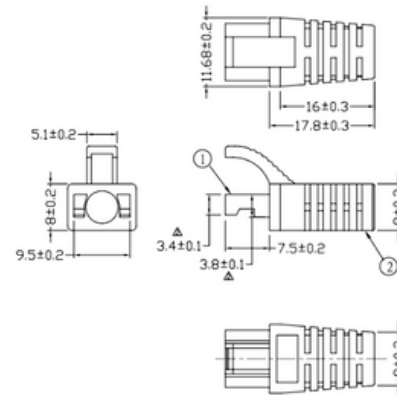
## Cat6 Strain Relief Boots

**DESCRIPTION:** Cat6 Strain Relief Boots

**PART CODE:** SFX/ACC-SRB-C6

### FEATURES

- Guards against broken connector tabs and snagging
- Reduces cable bends to maintain data speed and prevent data loss
- Dampens cable movement and vibrations
- Compatible with industry standard RJ45 connectors
- Designed for Cat6 twisted pair cables
- Suitable for Cat6 overall diameter: 5.8mm - 6.5mm
- Colour options to match cable



\*Cat6a Strain Relief Boots available on request. Please contact us for more details.

# CABLE TIES

Cable ties, crafted from nylon, are versatile fasteners commonly used to secure electrical cables or wires. These self-locking fasteners provide robust strength, rigidity, heat stability, and chemical resistance. They aid in organising cables, available in various sizes and lengths. Featuring a head design for easy insertion and loop creation, they securely lock once tightened. The teeth ensure a permanent lock, preventing backward pulling. Available in a wide range of sizes and lengths to meet your specific needs.

## Nylon Cable Ties

**DESCRIPTION:** Nylon Cable Ties

**PART CODE:** SFX/ACC-TIE-NYL

### FEATURES

- Possesses flame-retardant properties
- Versatile, ideal for various applications
- Facilitates easy threading
- Built-in locking mechanism to prevent unintended removal
- Colour options to match cable



Stainless Steel Cable Ties are ideal for harsh environments and high-temperature areas. Featuring a rollerball design, these self-locking ties ensure quick and effortless installation. Manufactured from stainless steel, they boast exceptional resistance to abrasion, corrosion, radiation, weathering, and extreme temperatures. With a higher load carrying capacity, they are suitable for various strapping applications. Available in a wide range of sizes and lengths to meet your specific needs.

## Stainless Steel Cable Ties

**DESCRIPTION:** Stainless Steel Cable Ties

**PART CODE:** SFX/ACC-TIE-FIRE

### FEATURES

- Flame retardant for enhanced safety
- Exhibits high tensile strength for reliability
- Self-locking design ensures secure fastening
- Suitable for indoor and outdoor use, offering exceptional resistance to high temperatures, chemicals, weather, and abrasion
- Specifically engineered for industrial applications in harsh environments
- Non-releasable rollerball locking mechanism for secure fitting
- Highly durable with outstanding chemical resistance



# FACEPLATES

Single and Double Gang Faceplates are the industry standard solution for seamlessly integrating Euro style modules into your cabling setup. Designed to accommodate various modules, these faceplates come in a standard size and are supplied with fixing screws for easy installation. Compatible with Euro style modules and 1/4 blanks, they offer versatility and convenience for your networking needs.

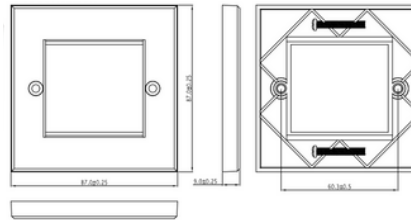
## Single Gang Faceplate

**DESCRIPTION:** Single Gang Faceplate for 25mm x 50mm

**PART CODE:** SFX/ACC-C5-6-1XFP

### FEATURES

- Holds up to 2 x modules
- White thermoplastic material
- Dimensions: 86mm x 86mm



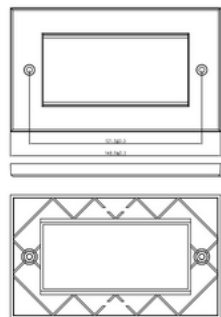
## Double Gang Faceplate

**DESCRIPTION:** Double Gang Faceplate for 25mm x 50mm

**PART CODE:** SFX/ACC-C5-6-2XFP

### FEATURES

- Holds up to 4 x modules
- White thermoplastic material
- Dimensions: 86mm x 146mm





# BLANKS

Our Blanks are the perfect solution for achieving a clean and organised finish in your networking setup. Designed to fit seamlessly into any Faceplates, these blanks offer versatility and flexibility. If you find yourself with empty spaces on your faceplate, our blanks provide a neat and tidy solution, ensuring a professional appearance. Two 1/4 blanks and one 1/2 blank are equivalent to the size of one module, allowing you to customise your configuration effortlessly.

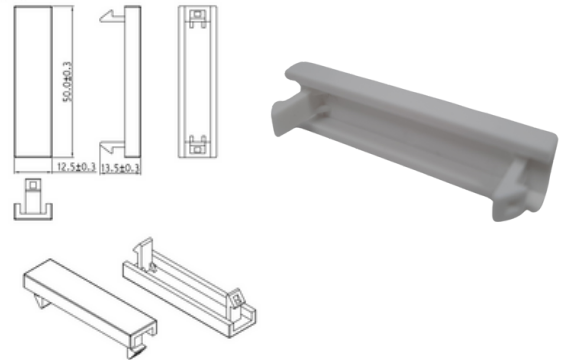
## Blank Plate - 1/4

**DESCRIPTION:** Quarter Blank Plate

**PART CODE:** SFX/ACC-C5-6-FP-QUARTER-BLNK-WHT

### FEATURES

- Compatible with Securi-Flex® faceplates
- White thermoplastic material
- Dimensions: 12.5mm x 50mm



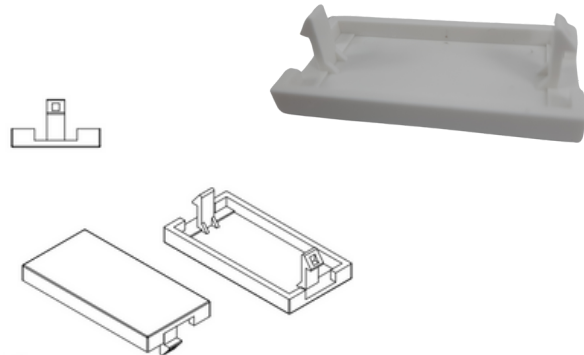
## Blank Plate - 1/2

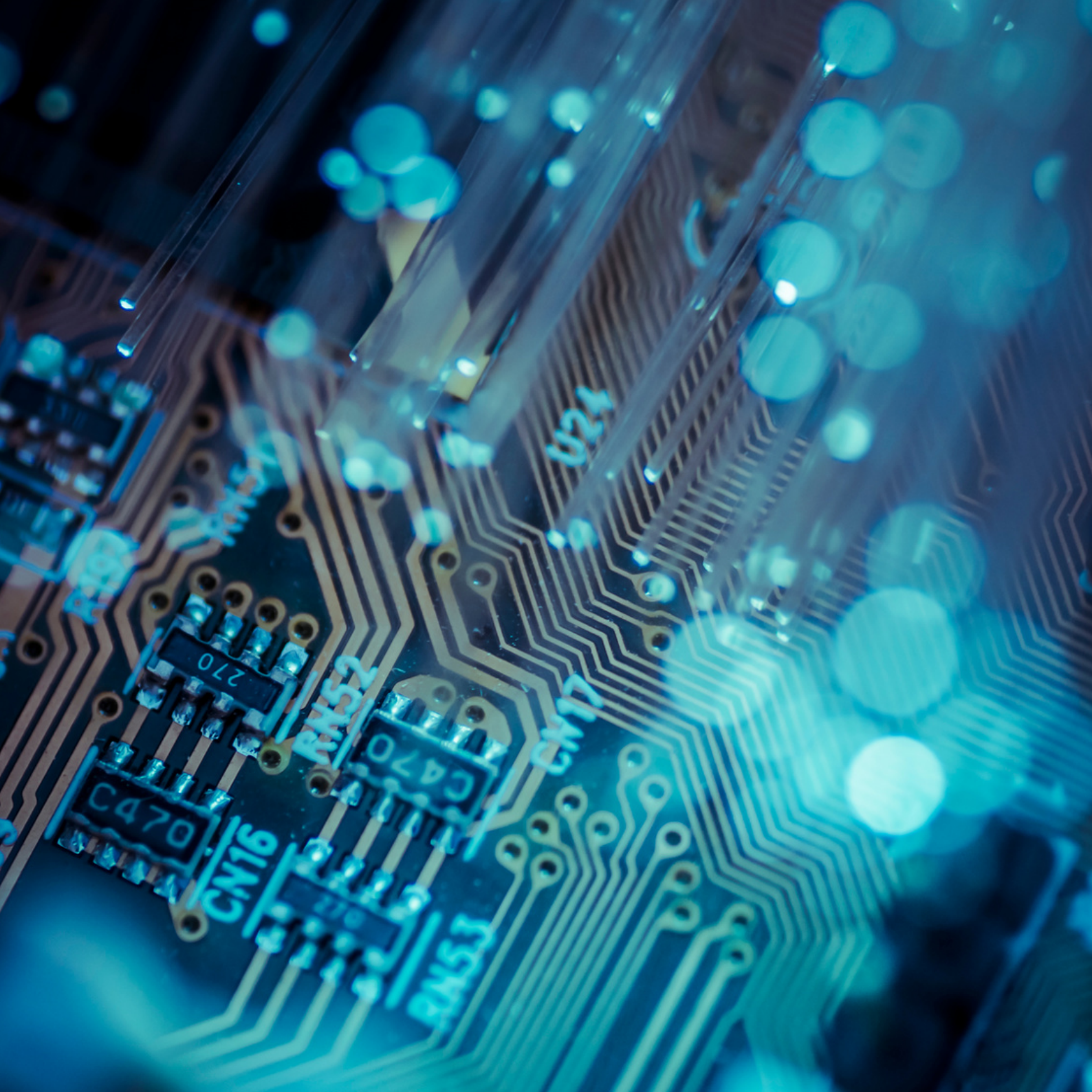
**DESCRIPTION:** Half Blank Plate

**PART CODE:** SFX/ACC-C5-6-FP-HALF-BLNK-WHT

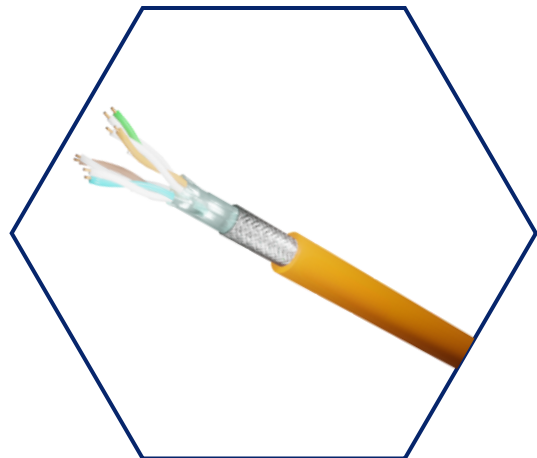
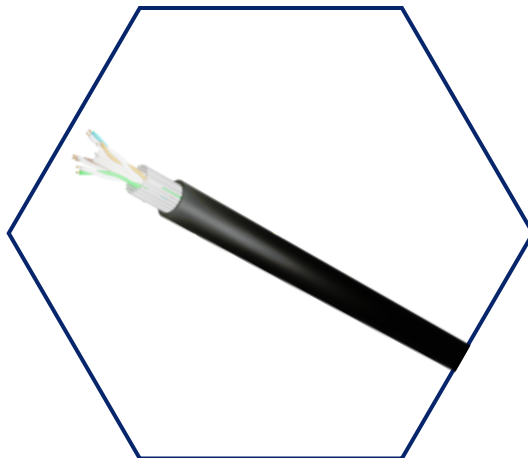
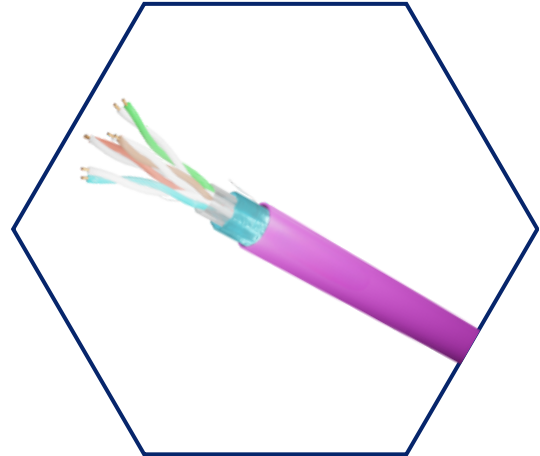
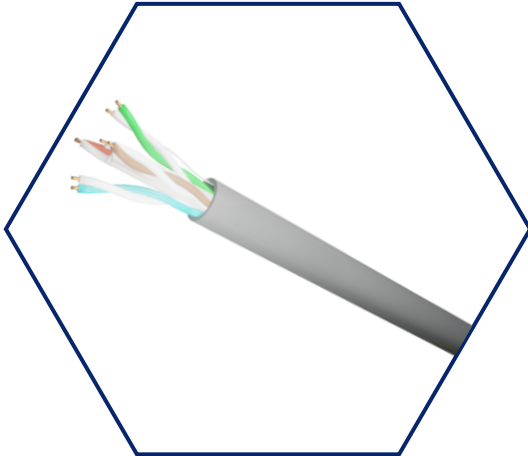
### FEATURES

- Compatible with Securi-Flex® faceplates
- White thermoplastic material
- Dimensions: 25mm x 50mm





# DATA CABLES



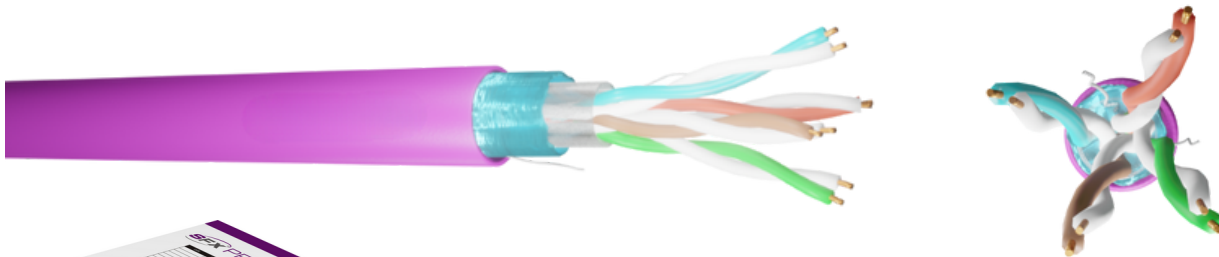
# CAT5E DATA CABLE RANGE - FOILED TWISTED PAIRS (FTP)

Category 5e (Cat5e) data cables are a type of twisted pair cable commonly used for ethernet networking. They are designed to support data transmission speeds up to 1 gigabit per second (Gbps) over short distances, making them suitable for most home and small business networks. Cat5e cables consist of four twisted pairs of copper wires encased in a protective jacket. These cables are backward compatible with older Cat5 standards and are widely available, affordable, and easy to install. They are commonly used for connecting computers, routers, switches, and other network devices within a local area network (LAN).

DESCRIPTION	EURO CLASS	SHEATH	PART CODE
Category 5e, 4pr FTP PVC	Eca	PVC	SFX/C5-FTP-PVC
Category 5e, 4pr FTP LSZH	Eca	LSZH	SFX/C5-FTP-LSZH
Category 5e, 4pr FTP PE	Fca	PE	SFX/C5-FTP-PE




 Available Colours

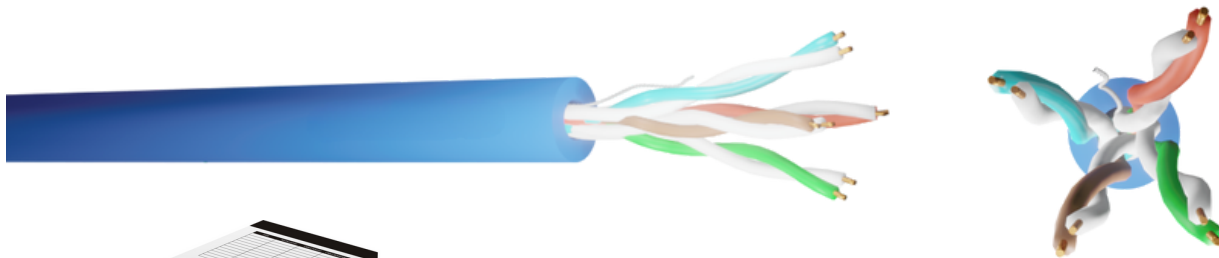


- 305m Easy Reel Boxes
- 25-Year Warranty
- Available Cut to Length

\*Other size drums available from stock, please contact us for more details.

# CAT5E DATA CABLE RANGE - UN-FOILED TWISTED PAIRS (UTP)

DESCRIPTION	EURO CLASS	SHEATH	PART CODE
Category 5e, 4pr UTP PVC	Eca	PVC	SFX/C5-UTP-PVC
Category 5e, 4pr UTP LSZH	Eca	LSZH	SFX/C5-UTP-LSZH
Category 5e, 4pr UTP LSZH Dca	Dca	LSZH	SFX/C5-UTP-LSZH-D
Category 5e, 4pr UTP LSZH B2ca	B2ca	LSZH	SFX/C5-UTP-LSZH-B2
Category 5e, 4pr UTP PE	Fca	PE	SFX/C5-UTP-PE



- 305m Easy Reel Boxes
- 25-Year Warranty
- Available Cut to Length

\*Other size drums available from stock, please contact us for more details.



# CAT5E DATA CABLE RANGE - SWA (STEEL WIRE ARMoured), DB (DIRECT BURIAL) & MULTICORE

DESCRIPTION	EURO CLASS	SHEATH	PART CODE
Category 5e, 4pr UTP SWA	Fca	PE	SFX/C5-UTP-SWA-PE
Category 5e, 12pr UTP	Fca	PE	SFX/C5-UTP-12-PE
Category 5e, 25pr UTP	Fca	PE	SFX/C5-UTP-25-PE
Category 5e, 4pr UTP + 2x0.5mm power cores	Fca	LSZH	SFX/C5-UTP-2C-0.5-LSZH
Category 5e, 4pr UTP + 2x0.5mm power cores	Fca	PE	SFX/C5-UTP-2C-0.5-PE
Category 5e, 4pr UTP Direct Burial HDPE	Fca	HDPE	SFX/C5-UTP-DB

 Available Colours



- 25-Year Warranty
- Available Cut to Length

# CAT6 DATA CABLE RANGE - FOILED TWISTED PAIRS (FTP)

Category 6 (Cat6) data cables are an advanced type of twisted pair cable primarily used for ethernet networking. They are engineered to support data transmission speeds up to 10 gigabits per second (Gbps) over short distances, making them suitable for demanding applications such as high-speed internet, video streaming, and data-intensive tasks. Cat6 cables are constructed with four twisted pairs of copper wires, typically with stricter specifications for twists per inch and better insulation compared to Cat5e cables. This enhanced design minimises crosstalk and interference, resulting in more reliable and higher-quality network connections. Cat6 cables are backward compatible with Cat5e and Cat5 standards, making them versatile for various network setups.

DESCRIPTION	EURO CLASS	SHEATH	PART CODE
Category 6, 4pr FTP LSZH	Eca	LSZH	SFX/C6-FTP-LSZH
Category 6, 4pr FTP LSZH Dca	Dca	LSZH	SFX/C6-FTP-LSZH-D
Category 6, 4pr FTP PE	Fca	PE	SFX/C6-FTP-PE
Category 6, 4pr F-UTP SWA LSZH	Fca	LSZH	SFX/C6-F-UTP-SWA-LSZH



- 305m Easy Reel Boxes
- 25-Year Warranty
- Available Cut to Length

\*Other size drums available from stock, please contact us for more details.

# CAT6 DATA CABLE RANGE - UN-FOILED TWISTED PAIRS (UTP)

DESCRIPTION	EURO CLASS	SHEATH	PART CODE
Category 6, 4pr UTP PVC	Eca	PVC	SFX/C6-UTP-PVC
Category 6, 4pr UTP LSZH	Eca	LSZH	SFX/C6-UTP-LSZH
Category 6, 4pr UTP LSZH Dca	Dca	LSZH	SFX/C6-UTP-LSZH-D
Category 6, 4pr UTP LSZH B2ca	B2ca	LSZH	SFX/C6-UTP-LSZH-B2
Category 6, 4pr UTP PE	Fca	PE	SFX/C6-UTP-PE
Category 6, 4pr UTP SWA PE	Fca	PE	SFX/C6-UTP-SWA-PE



- 305m Easy Reel Boxes
- 25-Year Warranty
- Available Cut to Length

\*Other size drums available from stock, please contact us for more details.

# CAT 6A DATA CABLE RANGE - FOILED TWISTED PAIRS (U/FTP) & FOILED OUTER SCREEN + FOILED TWISTED PAIRS (F/FTP)

Category 6a (Cat6a) is an enhanced twisted pair ethernet cable designed to support higher data transmission speeds and bandwidths compared to Cat6 cables. With improved shielding to minimise interference, Cat6a is ideal for demanding networking environments requiring reliable, high-speed connections over longer distances, such as data centres and commercial installations.

DESCRIPTION	EURO CLASS	SHEATH	PART CODE
Category 6A, 4pr U/FTP LSZH	Eca	LSZH	SFX/C6A-UFTP-LSZH
Category 6A, 4pr U/FTP LSZH Dca	Dca	LSZH	SFX/C6A-UFTP-LSZH-D
Category 6A, 4pr F/FTP LSZH Dca	Dca	LSZH	SFX/C6A-F-FTP-LSZH-D
Category 6A, 4pr U/FTP LSZH B2ca	B2ca	LSZH	SFX/C6A-UFTP-LSZH-B2
Category 6A, 4pr F/FTP PE	Fca	PE	SFX/C6A-F-FTP-PE
Category 6A, 4pr U/FTP SWA PE	Fca	SWA	SFX/C6A-UFTP-SWA-PE



- 305m Easy Reel Boxes
- 25-Year Warranty
- Available Cut to Length

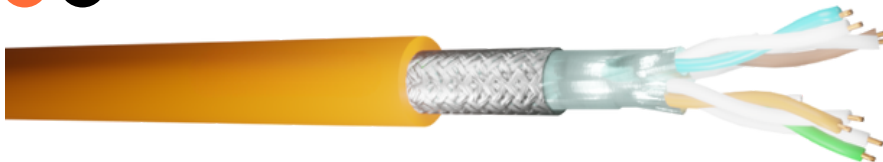
\*Other size drums available from stock, please contact us for more details.

# CAT 7A DATA CABLE RANGE - OVERALL BRAIDED SCREEN + FOILED TWISTED PAIRS (S/FTP)

Category 7a (Cat7a) data cables support speeds up to 10 Gbps over longer distances and up to 40 Gbps over shorter runs. With individually shielded pairs and overall shielding, they provide exceptional protection against interference. Ideal for demanding environments like data centres, Cat7a cables boast larger conductors and thicker insulation for enhanced performance and durability.

DESCRIPTION	EURO CLASS	SHEATH	PART CODE
Category 7A, 4pr S/FTP LSZH	Eca	LSZH	SFX/C7A-S-FTP-LSZH
Category 7A, 4pr S/FTP B2ca LSZH	B2ca	LSZH	SFX/C7A-S-FTP-LSZH-B2
Category 7A, 4pr S/FTP Black PE	Fca	PE	SFX/C7A-S-FTP-PE

  Available Colours



- 25-Year Warranty
- Available Cut to Length

# CAT 8.1 DATA CABLES

## OVERALL BRAIDED SCREEN + FOILED TWISTED PAIRS (S/FTP)

Category 8.1 (Cat8.1) is a twisted pair ethernet cable that belongs to the Category 8 standard. It is designed to support extremely high data transmission speeds over short distances. Cat8.1 cables are built with strict specifications for shielding and twisted pair construction to minimise crosstalk and interference. They are capable of supporting data rates of up to 25 gigabits per second (Gbps) or even 40 Gbps over distances up to 30 meters. Cat8.1 cables are typically used in data centre environments and other high-demand applications where ultra-fast and reliable networking is essential.

DESCRIPTION	EURO CLASS	SHEATH	PART CODE
Category 8.1, 4pr S/FTP LSZH	Dca	LSZH	SFX/C8.1-S-FTP-LSZH

 Available Colours

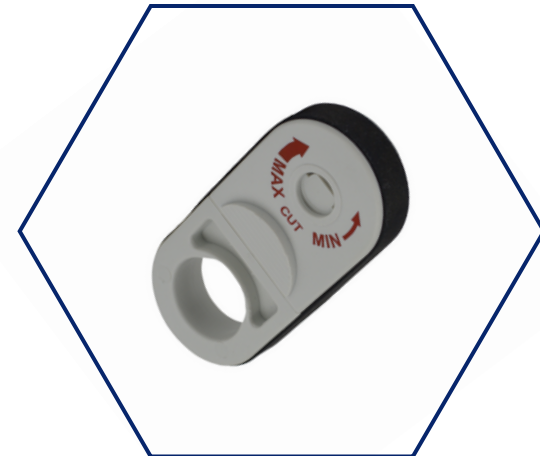
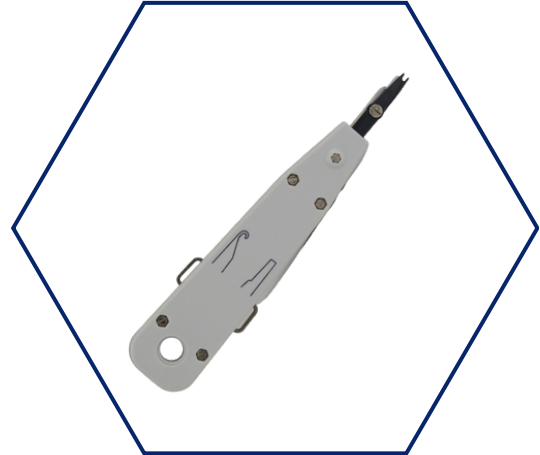


- 25-Year Warranty
- Available Cut to Length (up to 100m drums)





# TOOLS





# PUNCH DOWN TOOL

Punch down tools are designed for inserting wires into faceplates, telephone sockets, or patch panels.

**DESCRIPTION:** Punch Down Termination Tool

**PART CODE:** SFX/ACC-TOOL-PUNCH-DOWN-GRY

## FEATURES

- Inserts, connects, and cuts wire simultaneously
- Extraction lever on side of tool
- Punch down tool used to cut and insert cables into telephone accessories



---

# CYCLOPS STRIPPING TOOL

The "Cyclops" tool safely and accurately strips various cables, including Twisted Pair (UTP and STP), multicore (shielded and unshielded), Voice, Data, Audio, and Security cables up to 11mm in diameter. With no exposed blades or manual adjustments needed, it's easy to use and cleanly severs PVC or Low Smoke insulation without damaging the braid, foil, or conductors.

**DESCRIPTION:** Cyclops Cable Stripping Tool

**PART CODE:** SFX/ACC-TOOL-STRIP-CYCL-WHT

## FEATURES

- UTP & STP twisted pair cable stripper
- Suitable for all types of data, alarm, telephone, audio, and fibre optic cables
- Insert cable and rotate the tool twice then remove cable for a quick clean strip
- Data cable range up to 11mm diameter
- Automatic operation requires no user adjustments
- Safe to use as there is no exposed blade
- This multipurpose tool automatically adapts itself to accept cable diameters of up to 11mm (0.43")
- This tool is ready to use straight from the box, this ensures a reliable consistent cut



# CRIMPING TOOLS

Our range of Crimping tools are used to attach RJ45, RJ12, and RJ11 connectors onto the ends of Networking cables. They consist of a crimper and a blade for trimming excess cable. These tools are essential for creating custom-length Ethernet cables or repairing damaged ones.

**DESCRIPTION:** Crimping Tools & Accessories

**PART CODE:** SFX/ACC-TOOL-CR-RJ45

## FEATURES

- Crimp tool for RJ11, RJ12, and RJ45 connectors
- Cuts and strips insulation and crimps without having to change the diameter
- Integrated wire-stripper and cutter
- Precision guide and quick-release lever
- Cold-Forged iron jaws
- ABS plastic comfort grip
- Ratchet style



## CABLE HANDLING

# Drum-R II by Securi-Flex

The Ultimate Solution For Cable Handling



Cable Reel Repairs



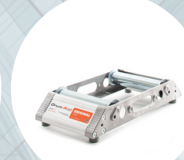
Cable Routing



Coil & Conduit Rollers



Drum Handles



Drum Rollers



Lifting Jacks



Check out our Cable Handling Range | Contact us for more information!



reddot winner 2021



DESIGN AWARD 2021

# CABLE CUTTING TOOLS

Our cable cutting tools cleanly cut through thick cables like aluminium, steel wire rope, or copper cable. They allow for precise cuts with less effort, reducing hand fatigue. These tools are essential in industries like electrical and construction for efficient and safe cable cutting.

**DESCRIPTION:** Cable Cutting Tools

**PART CODE:** SFX/ACC-TOOL-CUTTER-CU-ALU-38MM

## FEATURES

- Suitable for non-armoured cables
- Dimensions: L 210mm
- Hand operated
- Heavy duty cable cutter for up to 38mm diameter cables



**DESCRIPTION:** Cable Cutting Tools

**PART CODE:** SFX/ACC-TOOL-CUTTER-CU-ALU-50MM

## FEATURES

- Suitable for non-armoured cables
- Dimensions: L 230mm
- Hand operated
- Heavy duty cable cutter for up to 50mm cables



**DESCRIPTION:** Cable Cutting Tools

**PART CODE:** SFX/ACC-TOOL-RACHET-CU-ALU

## FEATURES

- Suitable for non-armoured cables
- Dimensions: L 258mm
- Hand operated
- Ratchet style



**DESCRIPTION:** Cable Cutting Tools

**PART CODE:** SFX/ACC-TOOL-RACHET-SWA-32MM

## FEATURES

- Suitable for armoured cables up to 32mm diameter cables
- Dimensions: L 410mm
- Hand operated
- Ratchet style



# CABLE TIE GUNS

Cable tie guns, also known as cable tie tensioning tools or cable tie installation tools, are handheld devices used to tighten and cut cable ties quickly and efficiently. These tools are commonly used in various industries for bundling and securing cables, wires, hoses, and other objects.

**DESCRIPTION:** Manual Cable Tie Tool - Suitable for Nylon Cable Ties

**PART CODE:** SFX/ACC-TOOL-GUN-MET-4.8MM

SFX/ACC-TOOL-GUN-MET-9MM

## FEATURES

- Cable tie tensioner and cutter designed for fast and simple installation of nylon cable ties
- Achieve desired tension, then use the separate lever to trim excess cable tie for a clean appearance



---

**DESCRIPTION:** Manual Cable Tie Tool - Suitable for Stainless Steel Cable Ties

**PART CODE:** SFX/ACC-TOOL-GUN-STNSTL-BLK

## FEATURES

- Tensioner and cutter for convenient and speedy installation of stainless steel cable ties
- Achieve desired tension, then use the separate lever to trim excess cable tie for a clean appearance



---

**DESCRIPTION:** Manual Cable Tie Tool - Suitable for Stainless Steel Cable Ties

**PART CODE:** SFX/ACC-TOOL-GUN-STNSTL-GRY

## FEATURES

- Tensioner and cutter for speedy installation of stainless steel cable ties
- Achieve desired tension, then use the separate lever to trim excess cable tie for a clean appearance







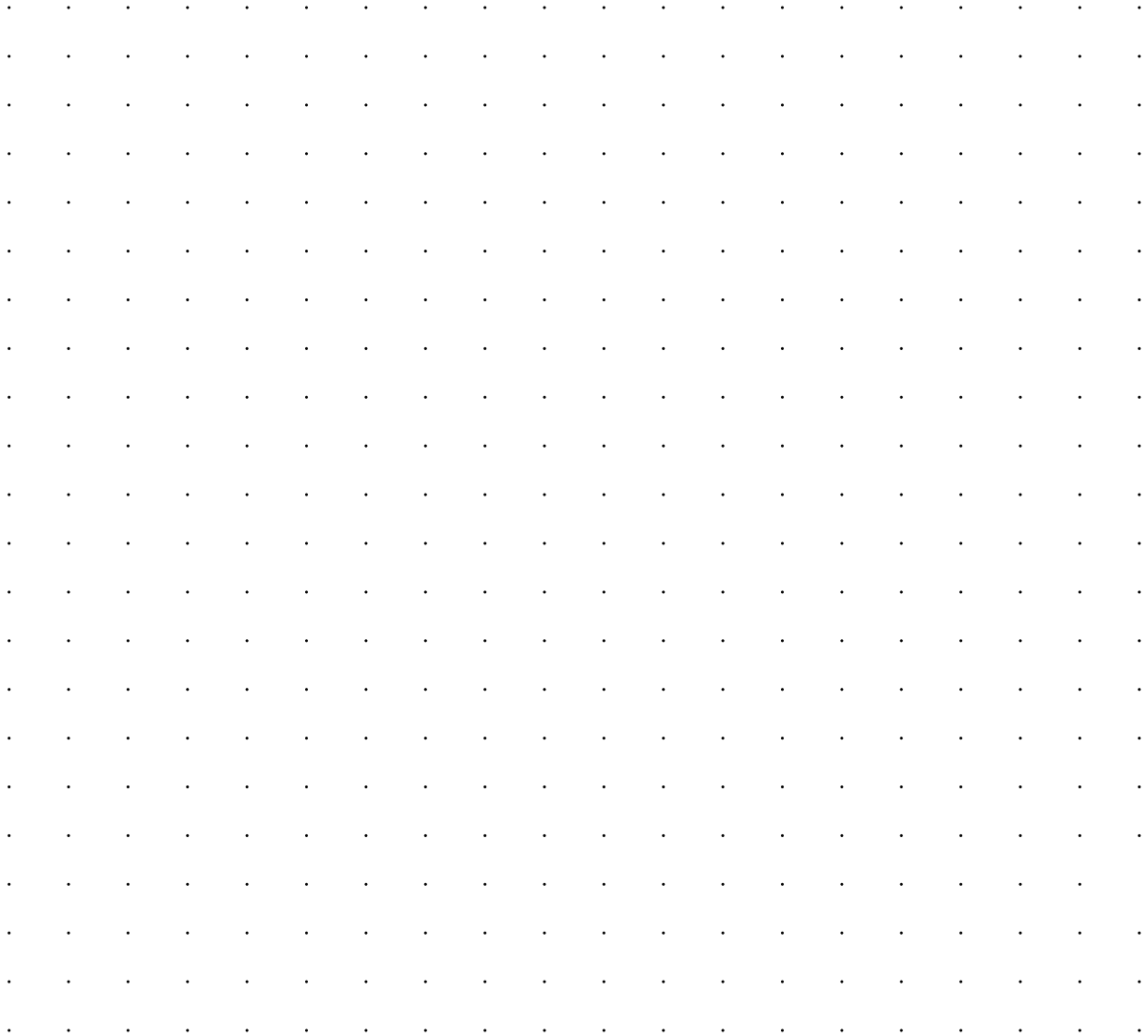
**Securi-Flex<sup>®</sup>**

Creating Connections | Powering Possibilities





# NOTES







Creating Connections | Powering Possibilities

Disclaimer - While every effort has been made to ensure the accuracy and completeness of this brochure, no guarantee is given nor responsibility taken for errors and omissions and all information is subject to change without prior written notice.



Creating Connections | Powering Possibilities

 [enquiries@securiflex.co.uk](mailto:enquiries@securiflex.co.uk)  
 03333 44 66 23



Units 6 - 10 Mackley Ind. Est | Henfield Road  
Small Dole | West Sussex | BN5 9XR | [www.securiflex.co.uk](http://www.securiflex.co.uk)