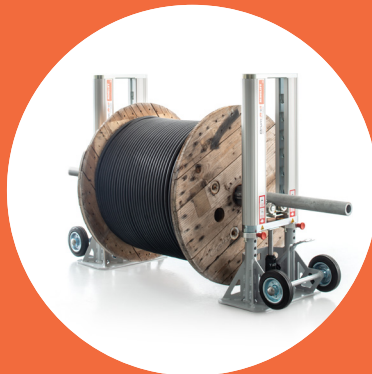


Drum-R II

by **Securi-Flex**



Securi-Flex[®]

Creating Connections | Powering Possibilities

INTRODUCTION

Securi-Flex® has been a dedicated supplier of specialist cables for over 25 years, catering to domestic and commercial applications.

We have established a reputation for providing high-quality products and unprecedented customer service, which are the foundation of our success.

Our commitment to both quality and service has been a driving force in building strong & lasting relationships with our valued customers.

At Securi-Flex®, cables are at the heart of what we do, and as such, we have a clear understanding of the common frustrations and potential issues that can arise during cable handling and installation.

We recognise the importance of proper cable handling, to ensure optimal performance and longevity of the product, and we strive to provide solutions that alleviate these concerns.

We also know and appreciate that quality cables need quality handling and with this in mind we are proud to introduce our new and unique range of cable handling equipment...

Drum-Roll by Securi-Flex® is our new and innovative range of cable handling equipment that is set to transform the way cables, coils, and conduit are managed and handled on-site.

Our state-of-the-art Drum-Roll range has been designed and built with years of engineering expertise and is the result of our commitment to delivering innovative solutions to the electrical industry that make cable handling safer, quicker, and easier.

With our Drum-Roll range, you can say goodbye to the time-consuming and often hazardous task of manual handling and transporting heavy and awkward cable drums, coils, and conduit. Our cutting-edge range has been designed to address these common challenges and is a must-have for any professional installer looking to improve their productivity, safety, and overall efficiency.

Built to the highest standards, our Drum-Roll range features premium materials and only the best manufacturing techniques. So, if you're looking for a safe, reliable, and efficient way to handle and transport cables on-site, look no further than the Drum-Roll by Securi-Flex® - in our professional opinion, it represents the ultimate solution for cable handling needs, setting a new benchmark in the industry.

From the Team at Securi-Flex®

CONTENTS



Cable reel roller

ORIGINAL	max. reel width 520 mm	08 – 15
ORIGINAL XL	max. reel width 670 mm	16
ORIGINAL XS	max. reel width 220 mm	17
CONTOUR	max. reel Ø 510 mm	18 – 20
CARRYGRIP	max. reel Ø 510 mm	22 – 25



Coiled cable roller

CLOU	outer Ø up to 750 mm	28 – 34
CLOU XL	outer Ø up to 1,000 mm	35
CLOU SLIM	inner Ø 105 mm	36 – 37
CLOU FIX	fix cable coil	38 – 39
CLOU UP	standfeet	40 – 41
CLOU MOVE	castors	42 – 43
VARIO	outer Ø up to 450 mm	44 – 46
VARIO SLIM	inner Ø 95 mm	47



Large cable drum roller

JUMBO	max. drum Ø 1,800 mm	50 – 57
RAIL	max. drum Ø 1,400 mm	58 – 61



Hydraulic cable drum lifting jack

MINILIFT	up to 4,000 kg	64 – 70
JUMBOLIFT	up to 6,000 kg	71
EASYLIFT	up to 2,000 kg	72 – 75



Cable routing

FLEXIPASS	78 – 85
-----------	---------



Our knowledgeable team is backed by our advanced IT and distribution infrastructure, which includes a fully automated warehouse management system, enabling us to offer our customers a seamless and efficient service.

CABLE REEL ROLLER

- ORIGINAL**
- ORIGINALXL**
- ORIGINALXS**

HANDLING

- CONTOUR**
- CARRYGRIP**



THERE CAN ONLY BE ONE.

THE UNBEATABLE TOOL FOR EASY USE OF CABLE REELS.



For more than four decades, the ORIGINAL has been a trusted tool for installers when unwinding cable reels. To ensure reliability, we've engineered a sturdy tool using solid pressure casting techniques. High-quality steel rollers make the ORIGINAL a favourite among professional installers who appreciate its durability and functionality. Our ORIGINAL has earned its reputation for long-lasting quality, even under the toughest conditions. There can only be one ORIGINAL!

The success of an idea often hinges on its simplicity, and our ORIGINAL's design has enabled us to expand the product family to meet evolving market needs. In addition to the classic ORIGINAL, we now offer the ORIGINAL XL with extra-wide steel rollers, and the ORIGINAL XS as a compact version. With this family of cable reel rollers, we can satisfy a wide range of market requirements.

THE ORIGINAL – SINCE 1978.

Our ORIGINAL cable reel roller simplifies unwinding reels of all sizes, up to 1,200 mm in diameter. By using spring core axles, the position of the reel bearing rollers can be easily adjusted. Our closed reel bearings meet the highest standards, providing maximum protection against dirt and corrosion.

Additionally, our ORIGINAL features a unique anti-slip-on ramp that prevents the cable drum from slipping during winding or loading onto the roller. The ergonomic design, with burr-free,

rounded edges, ensures operator safety on site and when handling.

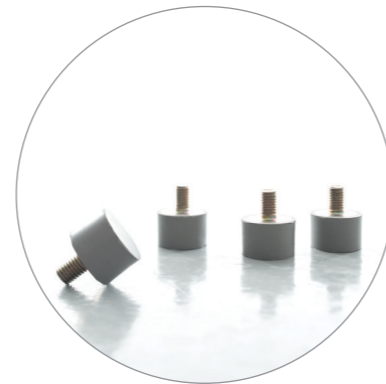
It's the little details that make our ORIGINAL stand out, and we take pride in its unique features. Rubber feet provide stability and facilitate the unwinding of even the heaviest of drums. Our ORIGINAL has been trusted for decades as a maintenance-free tool suitable for use indoors or outdoors. There can only be one ORIGINAL!



Simply changing the position of the reel bearing rollers utilising internally sprung axles.



Ergonomic equipment including an anti-slip reeling-on ramp, burr-free and rounded shape promoting maximum safety to the operator.



All cable reel rollers are supplied with rubber feet. Castors can be ordered separately.



ORIGINAL

THE ORIGINAL – FOR CABLE REELS.

TECHNICAL DATA

Load-bearing capacity	200 kg
Roller gap	90, 150, 240, 300, 330 mm
Weight without castors	7.5 kg
Max. reel width	520 mm
Outer dimensions (W x L x H)	550 x 530 x 100 mm

ORDER CODE

ORIGINAL
SFX/ACC-DRUM-ORIGINAL-1

ACCESSORIES

CASTORS (set = 4 pcs.)
SFX/ACC-DRUM-SPARE-CASTOR-4



 ORIGINAL VIDEO

ORIGINALXL

THE ORIGINAL XL DESIGNED FOR LARGER CABLE REELS.

TECHNICAL DATA

Load-bearing capacity	200 kg
Weight without castors	9.1 kg
Max. reel width	670 mm
Outer dimensions (W x L x H)	710 x 530 x 100 mm

ORDER CODE

ORIGINAL XL
SFX/ACC-DRUM-ORIGINAL-XL-1

ACCESSORIES

CASTORS (set = 4 pcs.)
SFX/ACC-DRUM-SPARE-CASTOR-4



ORIGINALXS

THE ORIGINAL XS DESIGNED FOR SMALLER CABLE REELS.

TECHNICAL DATA

Load-bearing capacity	200 kg
Weight without castors	4.9 kg
Max. reel width	220 mm
Outer dimensions (W x L x H)	259 x 531 x 114 mm

ORDER CODE

ORIGINAL XS
SFX/ACC-DRUM-ORIGINAL-XS-1

ACCESSORIES

CASTORS (set = 4 pcs.)
SFX/ACC-DRUM-SPARE-CASTOR-4



THE SOLUTION FOR DEFECTIVE DRUMS – CONTOUR ON AND DONE!

In recent years, our customers have raised concerns about damaged and poor quality cable drums on the market, and set us the challenge of coming up with a solution, and the CONTOUR was born.

This two-piece set is suitable for use on drums weighing up to 200 kg and with an outer diameter of up to 510 mm. As with our other products, the CONTOUR is engineered for use on the toughest of sites and proven for reliable and ongoing performance. Our high-quality design ensures long-term use, and our customers have trusted it for over 20 years.

The CONTOUR's lightweight, shockproof plastic moulding makes it a robust tool, and a simple lever mechanism provides a secure hold on any type of drum. Adjusting the clamping force is easy with the adjusting screw, and after tightening, the drum can be easily unwound using our reliable ORIGINAL cable reel roller.

We always prioritise operational safety, and our CONTOUR solution enables installers to continue using their existing unwinding systems. With the CONTOUR, even damaged cable drums can be utilised with ease on our proven ORIGINAL - you don't need a new cable drum, just a good idea.



Place a CONTOUR wheel on the outside of the assembled cable drum. Now, switch the lever. This activates the inner tension core and the CONTOUR wheel is tightened to the drum.

CONTOUR

THE SAFETY WHEEL FOR DAMAGED CABLE REELS.

TECHNICAL DATA

Max. drum weight	200 kg
Max. drum Ø	510 mm
Holding capacity outer rim	55 – 62 mm

ORDER CODE

CONTOUR (Set = 2 pcs.)
SFX/ACC-DRUM-CONTOUR-2

ACCESSORIES

Large capacity outer rims Ø 79 mm (Set = 2 pcs.)
SFX/ACC-DRUM-CONTOUR-NUT-2
Holding capacity outer rim 79 – 94 mm



 CONTOUR VIDEO

CARRYGRIP – CARRYING REELS AS PROFESSIONALS WOULD.

Moving, transporting, and setting up cable drums can be a challenging task, as they are bulky and unwieldy. But with CARRYGRIP, you have the perfect tool for safe handling on site.

The CARRYGRIP can be quickly and easily adjusted to the appropriate drum size and locked in place, making it ready for use in just a few seconds. With CARRYGRIP, you and a colleague can transport a load of up to 100 kg safely and without straining or causing injury.

CARRYGRIP is also an essential and reliable tool for setting up and laying down cable drums. With its sturdy single handle, you can effortlessly and safely manoeuvre your cable reel into the desired position with minimal effort.

Delivered in a set of two and crafted with best quality materials, CARRYGRIP is designed for long-lasting and professional use. The CARRYGRIP offers everything you need for flexible, ergonomic, and safe handling of reels on the construction site.



Hook the carriers of the CARRYGRIP into the cable reel.



Loosen the clamping lever and guide the clamping unit to the edge of the cable reel.



Tighten the clamping lever at the edge of the cable reel by pressing down.



CARRYGRIP

THE TEAM PLAYER FOR SAFE HANDLING AND LIFTING OF CABLE REELS.

TECHNICAL DATA

Reel Ø	max. 600 mm*
Load per system	max. 50 kg
Load two systems	max. 100 kg

ORDER CODE

CARRYGRIP (1 set = 2 pcs.)
SFX/ACC-DRUM-CARRYGRIP-2

*Depending on the diameter of the inner hole



 CARRYGRIP VIDEO



The quality of our customer service is not just measured by how well we solve problems but by how well we prevent them from happening in the first place.

COILED CABLE ROLLER

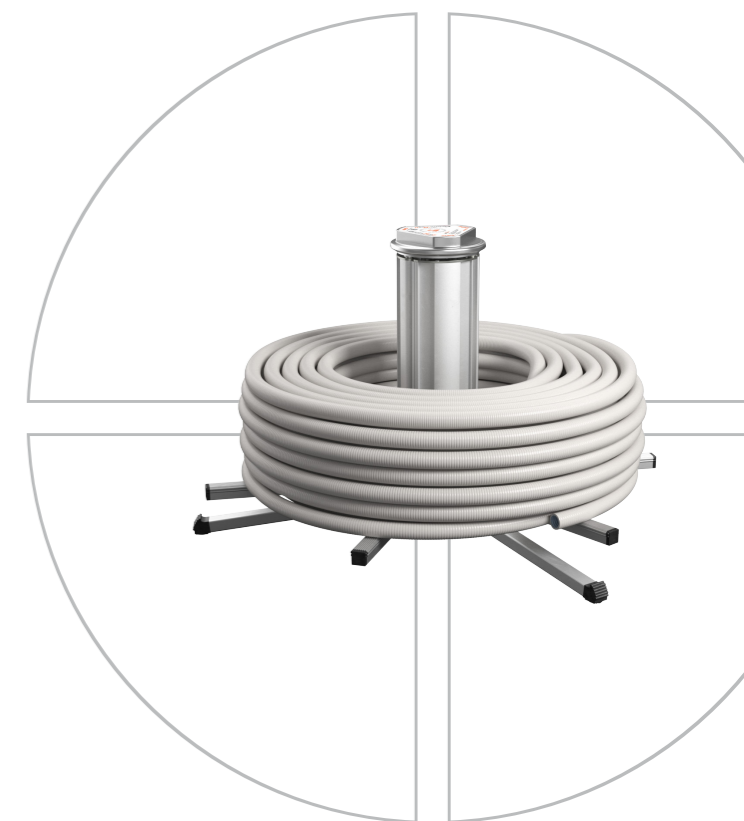
CLOU

CLOUXL

CLOUSLIM

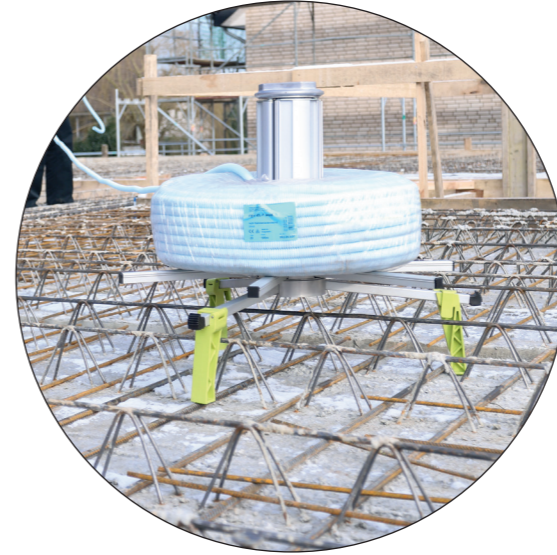
VARIO

VARIOSLIM



STRONG AND FLEXIBLE

Impressive variety of the giant performer: The CLOU family – ready for use for the most diverse pipe and cable coils.



For a quarter of a century, the CLOU has reigned as the top performer in unwinding of conduit & coils.

Whether it's wires, cables, conduit, chains, or steel cables, the CLOU delivers on its promises. With a maximum capacity of 80 kilograms, it can handle ring-shaped goods packed in cardboard boxes, foil, or plastic wrap, as well as goods without packaging. It can even manage large cables like 5 x 25 sq mm or rings with diameters of up to 750 mm. Thanks to the CLOU's

proven unwinding technology, it's possible to uncoil from the center of a coil without any twisting or tangling, making it a trusted tool for professional installers and highly regarded in the market.

There's no wobbling, rattling, or plastic involved with the CLOU, and it can be set up in just a few easy steps, making it a reliable and efficient solution for all your unwinding needs.

THE CLOU FAMILY – A CLEVER SOLUTION FOR EVERY PROBLEM.

The CLOU is a giant performer that can be transformed into a toddler-sized assistant thanks to its perfect technology.

With its ability to shrink to a reduced size, it can be easily stored in the included carrier bag and is always ready for use. For larger coils with a diameter of up to 1 metre, the CLOU XL is available, while the CLOU SLIM with its narrow core is perfect for coils with a small inner diameter. All designs are foldable, come with a carry bag, and offer the same advantages as the

rest of the CLOU family. In addition to its versatility, the CLOU also offers unique accessories that enhance its functionality. The CLOU UP provides optimum standing on bare floors, while the CLOU MOVE allows for quick changes of location. For coils that lack stable positioning, the CLOU FIX provides the perfect solution.

Like all the Drum-Roll products, the CLOU is designed to be maintenance-free and safe to use both indoors and outdoors.



Quickly unfolded



Quickly folded



With practical carrier bag



THE ULTIMATE UNWINDING TOOL FOR STANDARD CONDUIT & COILS.

TECHNICAL DATA

Load-bearing capacity	80 kg
Coil Ø	750 mm
Core Ø	min. 150 mm max. 260 mm
Core height	350 mm
Working field	800 x 800 mm
Storage capacity (Ø, H)	170 mm, 455 mm
Weight	7.5 kg

ORDER CODE

CLOU incl. carrier bag
SFX/ACC-DRUM-CLOU-1

ACCESSORIES

CLOU FIX (Set = 3 pcs.) incl. carrier bag
SFX/ACC-DRUM-CLOU-FIX-3
CLOU UP (Set = 3 pcs.)
SFX/ACC-DRUM-CLOU-UP-3
CLOU MOVE (Set = 3 pcs.)
SFX/ACC-DRUM-CLOU-MOVE-3



THE UNWINDING TOOL FOR EXTRA LARGE CONDUIT & COILS.

TECHNICAL DATA

Load-bearing capacity	80 kg
Coil Ø	max. 1,000 mm
Core Ø	min. 150 mm max. 260 mm
Core height	500 mm
Working field	1,100 x 1,100 mm
Storage capacity (Ø, H)	165 mm, 605 mm
Weight	9.5 kg

ORDER CODE

CLOU XL incl. carrier bag
SFX/ACC-DRUM-CLOU-XL-1

ACCESSORIES

CLOU FIX (Set = 3 pcs.) incl. carrier bag
SFX/ACC-DRUM-CLOU-FIX-3
CLOU UP (Set = 3 pcs.)
SFX/ACC-DRUM-CLOU-UP-3
CLOU MOVE (Set = 3 pcs.)
SFX/ACC-DRUM-CLOU-MOVE-3



THE SLIM UNWINDING TOOL FOR SMALL CONDUIT & COILS.

TECHNICAL DATA

Load-bearing capacity	80 kg
Coil Ø	750 mm
Core Ø	105 mm
Core height	300 mm
Working field	800 x 800 mm
Storage capacity (Ø, H)	165 mm, 420 mm
Weight	5.5 kg

ORDER CODE

CLOU SLIM incl. carrier bag
SFX/ACC-DRUM-CLOU-SLIM-1

ACCESSORIES

CLOU FIX (Set = 3 pcs.) incl. carrier bag
SFX/ACC-DRUM-CLOU-FIX-3
CLOU UP (Set = 3 pcs.)
SFX/ACC-DRUM-CLOU-UP-3
CLOU MOVE (Set = 3 pcs.)
SFX/ACC-DRUM-CLOU-MOVE-3



THE CLOU ACCESSORY TO PREVENT TANGLING AND SECURE THE COIL IN PLACE.

TECHNICAL DATA

Storage capacity (L x W x H)	30 x 160 x 87 mm
Weight per piece	100 g

ORDER CODE

CLOU FIX (Set = 3 pcs.) incl. carrier bag
SFX/ACC-DRUM-CLOU-FIX-3



CLOU FIX holds the ring together when it has been delivered with straps without foil packaging. Professional tip: first position CLOU FIX, then remove the strap.



THE CLOU ACCESSORY TO SUPPORT SMOOTH UNWINDING ON SITE.

TECHNICAL DATA

Dimensions (L x W x H)	52 x 63 x 157 mm
Weight per piece	165 g

ORDER CODE

CLOU UP (Set = 3 pcs.)	A90226
SFX/ACC-DRUM-CLOU-UP-3	



CLOU UP brings the CLOU where it belongs: above the building shell!

Small accessories, big impact.



CLOU UP VIDEO

THE CLOU ACCESSORY TO SUPPORT QUICK AND EFFICIENT MOVEMENT ON SITE.

TECHNICAL DATA

Dimensions (H x W)	152 x 77 mm
Weight per piece	1 kg

ORDER CODE

CLOU MOVE (Set = 3 pcs.)
SFX/ACC-DRUM-CLOU-MOVE-3



THE VARIO FAMILY.

The VARIO Family – the flexible solution for smaller coils.



The VARIO has been a trusted name in professional cable coil industry for almost 40 years. While it was initially designed with a red frame, the VARIO has been rolling onto construction sites worldwide in a fresh green colour. It's an easy to use and valuable tool for professional cable installers working on both residential and industrial applications.

There are two different versions of the VARIO available. With a 300 mm high core and a minimum diameter of 150 mm, the

VARIO family can unwind a variety of cables and coils without twists or tangles, all from the centre of the coil. The adjustable VARIO core can be adjusted to the size of the cable coil, creating the perfect fit.

For coils with particularly small inner diameters, we offer the VARIO SLIM. The VARIO family have been thoroughly tested for use on construction sites, in workshops, and in warehouses, ensuring their reliability and durability.



VARIO

THE MOBILE UNWINDING TOOL FOR CABLE COILS.

TECHNICAL DATA

Unwinding plate \varnothing	450 mm
Core \varnothing	min. 150 mm max. 260 mm
Core height	300 mm
Reception Rack (W x L)	510 x 460 mm
Overall height	530 mm
Load-bearing capacity	50 kg
Weight	13.5 kg

ORDER CODE

VARIO incl. Castors (Set = 4 pcs.)
SFX/ACC-DRUM-VARIO-1



VARIOSLIM

THE SOLID CLASSIC FOR CABLE COILS WITH SMALLER INNER DIAMETERS.

TECHNICAL DATA

Unwinding plate \varnothing	450 mm
Core \varnothing	95 mm
Core height	300 mm
Reception Rack (W x L)	510 x 460 mm
Overall height	530 mm
Load-bearing capacity	50 kg
Weight	11 kg

ORDER CODE

VARIO SLIM incl. Castors (Set = 4 pcs.)
SFX/ACC-DRUM-VARIO-SLIM-1



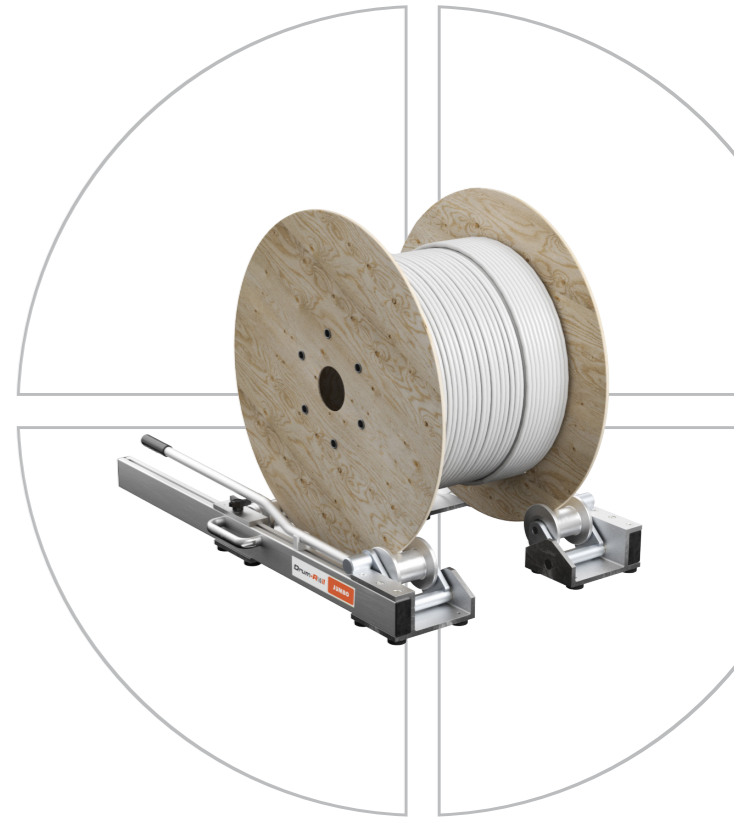
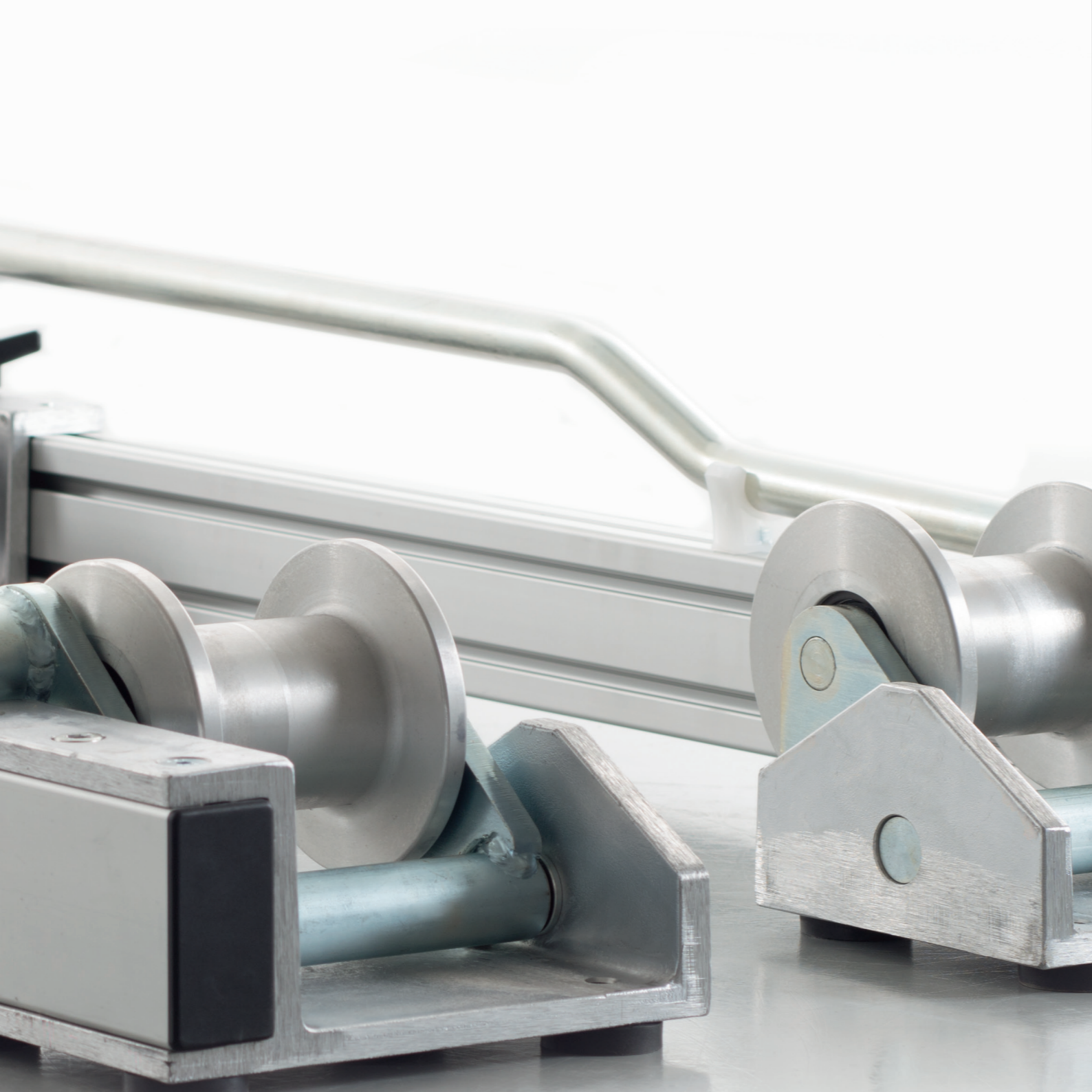
 **VARIO VIDEO**



Since our establishment in 1998, we have positioned ourselves as a prominent industry brand, prioritising product quality and customer service at our core.

LARGE CABLE DRUM ROLLER

**JUMBO
RAIL**



HEAVY WEIGHTS EASILY DONE.

With our large cable drum rollers, you can safely uncoil heavy cable drums.



The Drum-Roll JUMBO and RAIL large cable coilers are ideal for efficiently processing different cable types on large drums side by side. Thanks to their quick and easy drum-to-drum changeover, they offer unparalleled flexibility and are highly reliable. Our large cable drum rollers are designed to meet the

highest demands in terms of load capacity and stability. However, as any professional will attest, the quality of the cable drum is directly correlated to the quality of the unwinding process.

CLEVER TECHNOLOGY FOR EASY HANDLING OF LARGE DRUMS.

The JUMBO stands out for its quick and effortless drum-to-drum change capability. It can be conveniently moved to the required location and assembled with ease. The JUMBO is compatible with drums that have a diameter of up to 1.80 metres and can be transported either by forklift or manually.

To assemble, place the two JUMBO sections on either side of

the cable drum, adjust the movable counter rollers to match the cable drum's diameter, and use the simple lever mechanism to lift the cable drum into the unwinding position.

The JUMBO features a durable all-metal construction with maintenance-free ball bearings, ensuring a long-lasting service life.



Adjust the movable counter rollers according to the drum's diameter.



Raise the drum into its unwinding position.



Now your drum is ready for use.



JUMBO

SIMPLE AND FLEXIBLE – THE LARGEST OF OUR CABLE ROLLERS TO SUPPORT EFFICIENT UNWINDING OF LARGER CABLE DRUMS.

TECHNICAL DATA

Total Load-bearing capacity	1,500 kg
Recommended max. rolling weight for wooden drums*	700 kg
Drum Ø	min. 500 mm max. 1,800 mm
Width	277 mm
Length	1,206 mm
Height	195 mm
Weight per element	17 kg

ORDER CODE

JUMBO	SFX/ACC-DRUM-JUMBO-1
-------	----------------------

*Due to the sometimes poor condition of wooden drums, we recommend not to exceed the unwinding weight of 700 kg for easier handling.



 JUMBO VIDEO

THE COMPACT ONE FOR HANDLING LARGE DRUMS.

The RAIL is a dependable cable unwinding tool designed for drums with a maximum diameter of 1.40 metres. Equipped with high-quality ball-bearing support rollers, it can easily handle heavy cable products.

To use the RAIL, position the two unwinding sections parallel to each other in front of the drum flanges. The swivelling rollers

can be adjusted to fit the diameter of the cable drum by simply moving them into position. Then, roll the drum over the ramp and onto the RAIL.

To remove the cable drum, lock the supporting roller in place and roll the drum out of the RAIL and onto the floor – simple but effective.



The swivelling rollers can subsequently be adjusted to the diameter of the cable drum by simply moving them into position.

To roll up and unroll the drum, lock the front supporting rollers.

RAIL

COMPACT AND STURDY – THE SMALLER AND LIGHTER VERSION OF OUR CABLE ROLLERS.

TECHNICAL DATA

Total Load-bearing capacity	1,500 kg
Recommended max. rolling weight for wooden drums*	700 kg
Drum Ø	min. 500 mm max. 1,400 mm
Width	160 mm
Length	903 mm
Height	120 mm
Weight per element	9 kg


ORDER CODE

RAIL	SFX/ACC-DRUM-RAIL-1
------	---------------------

*Do not exceed the unwinding weight of 700 kg, to ensure a smooth unwinding process.



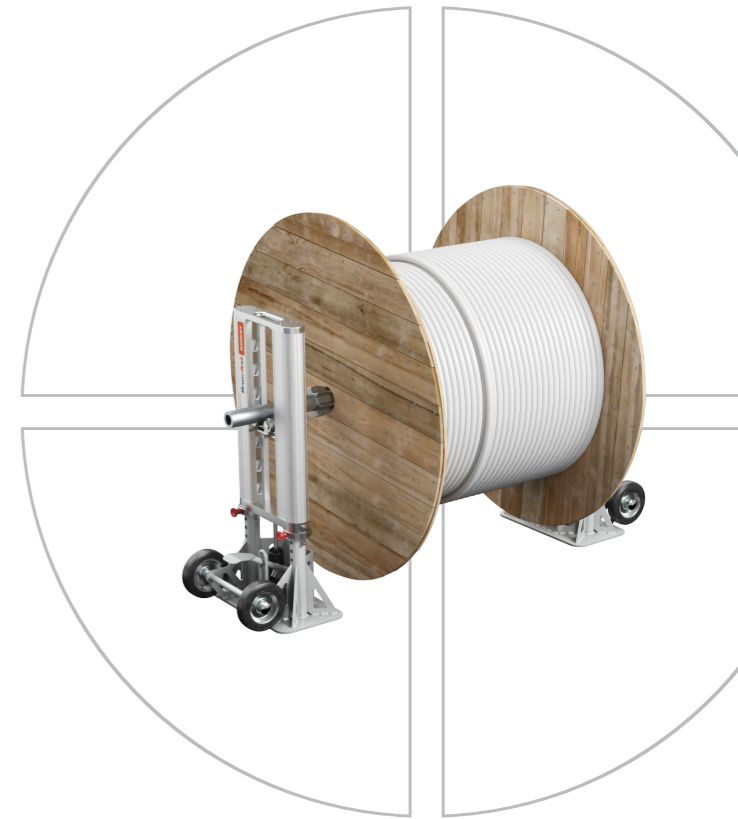
 RAIL VIDEO



Our facilities include in-house winding, cutting, and cable testing capabilities to ensure that quality and standards are upheld.

HYDRAULIC CABLE DRUM LIFTING JACK

MINILIFT
JUMBOLIFT
EASYLIFT



POWER PACKS LIFTING THE DRUMS.

Innovative, resilient, and unique: the perfect solution for professional drum handling.



Handling cable drums that weigh up to 6 tons and have a maximum diameter of 2.20 meters is no easy task, and safety and stability are of the utmost importance. That's why professionals have been choosing our high-performance drum lifters for years. Our drum lifters come equipped with mounting blocks that have floating bearings, as well as centering cone

locks on the drum axle, ensuring smooth and quiet operation and minimising the risk of the system tipping over during unwinding. Each drum lifter package includes two side parts, a drum axle, and corresponding centering cones, making it immediately ready for use - as you would expect from a Drum-Roll product.

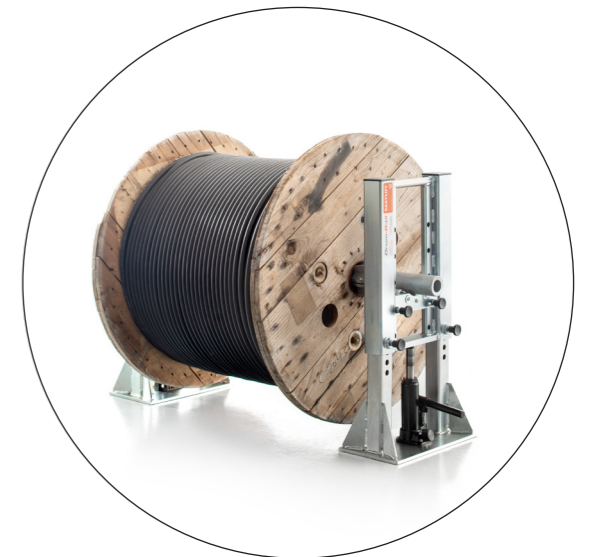
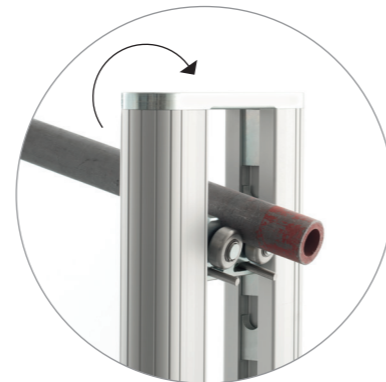
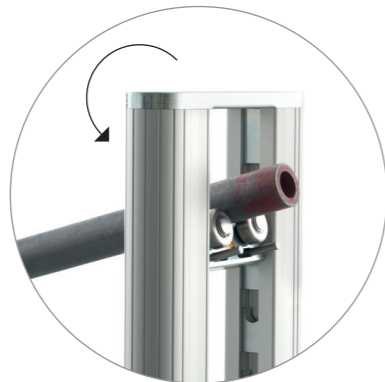
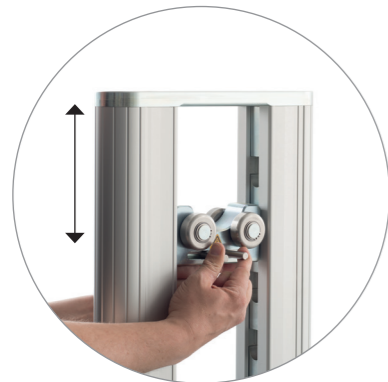
THE HIGH-END DRUM LIFTS MINILIFT AND JUMBOLIFT.

Our drum lifters are designed for professional use on construction sites and are known for their stability and flexibility. With a chassis that allows for easy manoeuvrability, these lifters can handle large cable drums weighing up to 6 tons and with a maximum diameter of 2.20 meters.

One of the key advantages of our drum lifters is their user-friendly design. First, the centering and locking cones are used to secure the cable drum in place on the drum axle, reducing movement and improving safety prior to lifting. The easily

positioned sides of the lifter are then placed adjacent to the drum, and the adjustable mounting block is locked into the guide profile at the height of the drum.

By then simply pumping the hydraulic jack, the cable drum is lifted off the ground, and the retaining rings are locked to secure the position. Finally, the lift system is lowered using the set screw on the hydraulic jack, ensuring a safe, stable, and easy lifting and unwinding process.



Height adjustability and compensation for uneven floors.

MINILIFT

THE LIFTER – A POWERFUL HYDRAULIC CABLE DRUM LIFTING JACK UP TO A MAXIMUM OF 4 TONS.

TECHNICAL DATA

Max. load	4,000 kg
Max. drum Ø	1,600 mm
Min. drum Ø	650 mm
Dimensions (H x D x W)	863 x 358 x 450 mm
Length of drum axle	1,500 mm
Max. drum width	1,000 mm
Weight per side	40 kg

ORDER CODE

MINILIFT Set: SFX/ACC-DRUM-MINILIFT-1

- two side parts
- one drum axle 1,500 mm
- one Set centering cones Ø 95 mm

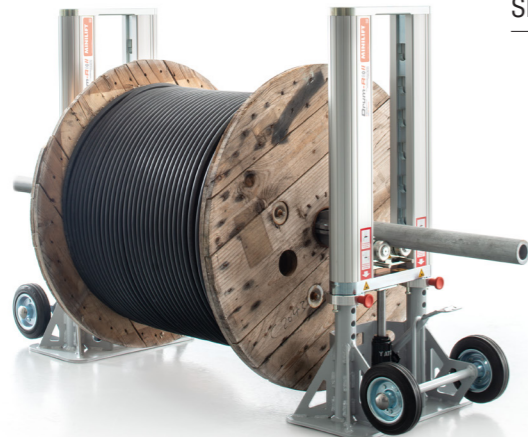
ACCESSORIES

Drum axle 1,850 mm

SFX/ACC-DRUM-SPARE-AXLEL1850MINI-1

Set centering cones Ø 140 mm

SFX/ACC-DRUM-SPARE-CENTRECONES-LG-2



 MINILIFT VIDEO

JUMBOLIFT

THE POWER HOUSE – OUR ULTIMATE HYDRAULIC CABLE DRUM LIFTING JACK UP TO A MAXIMUM OF 6 TONS.

TECHNICAL DATA

Max. load	6,000 kg
Max. drum Ø	2,200 mm
Min. drum Ø	700 mm
Dimensions (H x D x W)	1,122 x 440 x 500 mm
Length of drum axle	1,850 mm
Max. drum width	1,300 mm
Weight per side	70 kg

ORDER CODE

JUMBOLIFT Set: SFX/ACC-DRUM-JUMBOLIFT-1

- two side parts
- one drum axle 1,850 mm
- one Set centering cones Ø 95 mm
- one Set centering cones Ø 140 mm

ACCESSORIES

Drum axle 1,500 mm

SFX/ACC-DRUM-SPARE-AXLEL1500JUMBO-1



 JUMBOLIFT VIDEO

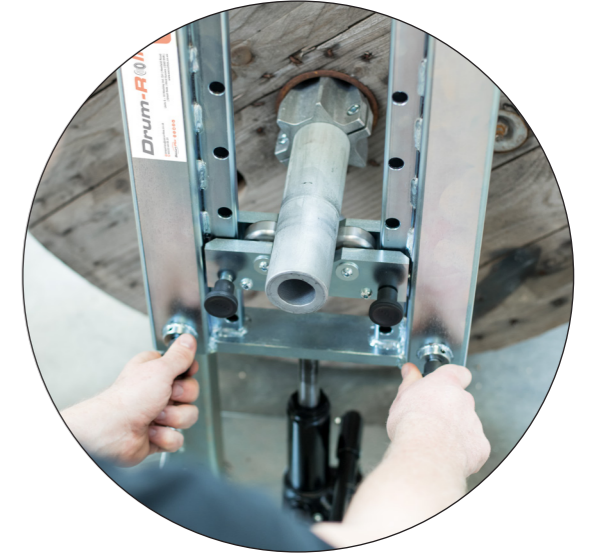
EASYLIFT – THE ENTRY-LEVEL MODEL FOR EASY DRUM HANDLING.

Our latest drum lifter is the perfect solution for those seeking to effortlessly handle medium-sized drums. With its sturdy and versatile design, the EASYLIFT ensures safe handling of cable drums weighing up to 2 tons and with a diameter of 1.20 m.

Like all Drum-Roll products, the EASYLIFT offers easy handling. Begin by securing the cable drum onto the drum axle using the center locking cones. Place the EASYLIFT's sides next to the

cable drum, adjust the mounting block to the drum axle's height, and secure it with locking bolts.

With a simple pump of the hydraulic system, you can lift the cable drum and secure it in place. Finally, using the adjusting screw on the hydraulic jack, lower the EASYLIFT into the unwinding position for a safe and easy unwinding.



Easy and safe adjustment of height by using the safety device.

THE LIGHT WEIGHT – HYDRAULIC CABLE DRUM LIFTING JACK UP TO A MAXIMUM OF 2 TONS.

TECHNICAL DATA

Max. load	2,000 kg
Max. drum Ø	1,200 mm
Min. drum Ø	600 mm
Dimensions (H x D x W)	640 x 250 x 450 mm
Length of drum axle	1,350 mm
Max. drum width	850 mm
Weight per side	26 kg

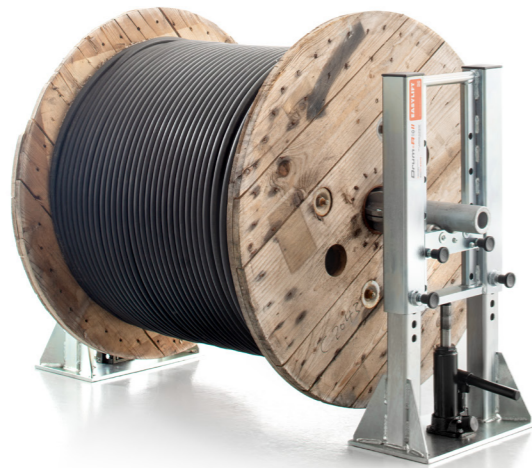
ORDER CODE

EASYLIFT Set: SFX/ACC-DRUM-EASYLIFT-1

- two side parts
- one drum axle
- Set centering cones

ACCESSORIES

Drum axle 1,500 mm
SFX/ACC-DRUM-SPARE-AXLEL1500JUMBO-1





Securi-Flex® maintains a presence in four locations, with two in West Sussex and two in Gloucester. Our operations span approximately 40,000 sq. ft of warehouse and distribution space, and we fulfil over 4,000 orders monthly to our customers across the UK.

CABLE ROUTING

FLEXIPASS



CABLE ROUTING

SIMPLY CLEVER THOUGHT AROUND THE CORNER.

The innovative cable routing system from Drum-Roll.



reddot winner 2021



Preventing cable damage is of utmost importance for all professional installers when cable routing, particularly for the likes of sensitive data cables. Cable pulling and routing can be further complicated by curves and height differences on route.

Our new FLEXIPASS product offers an ideal solution. It is compact, flexible, and easy to use. With its ergonomic design and smooth internal guide rollers, FLEXIPASS guarantees safe

and precise cable transfer around corners and edges of any cable management trays.

The basic FLEXIPASS set comes in a professional bag and includes three units. This provides maximum flexibility for the first use. You can also add more FLEXIPASS units to your cable management system as required and depending on the length of the cable run.



FLEXIPASS – QUICK AND EASY CABLE ROUTING FOR PROFESSIONALS.

Our FLEXIPASS is a versatile cable routing system suitable for all types of cable trays. It is designed to handle cables up to a diameter of 38 mm, with a particular focus on sensitive and specialist cables where routing can be challenging.

The FLEXIPASS features a smart roller arrangement that allows for optimal and frictionless cable routing across construction sites and applications. Weighing only 0.75 kg, the FLEXIPASS is suitable for use on light cable trays and can be quickly and

easily fixed with the one-hand clamping mechanism. The rubberised clamping surfaces ensure a secure hold without the need for cumbersome screws and connections, eliminating slipping, tilting, and time on site.

Simply insert the cable, secure it with the latch, and the FLEXIPASS is ready for use. Removing the FLEXIPASS is equally effortless, saving valuable time when assembling and dismantling the cable routing system.



Push



Span



Loosen



CABLE ROUTING MADE SIMPLE – THE PRACTICAL ALL ROUND SOLUTION FOR SECURE AND EFFICIENT CABLE ROUTING.

TECHNICAL DATA

Max. cable Ø	38 mm
Max. clamping width	48 mm
Weight per piece	850 g
Width (widest point)	65 mm
Length	331 – 379 mm
Height	148 mm

ORDER CODE

FLEXIPASS (Set = 3 pcs.) incl. carrier bag
SFX/ACC-DRUM-FLEXIPASS-3
FLEXIPASS (single)
SFX/ACC-DRUM-FLEXIPASS-1

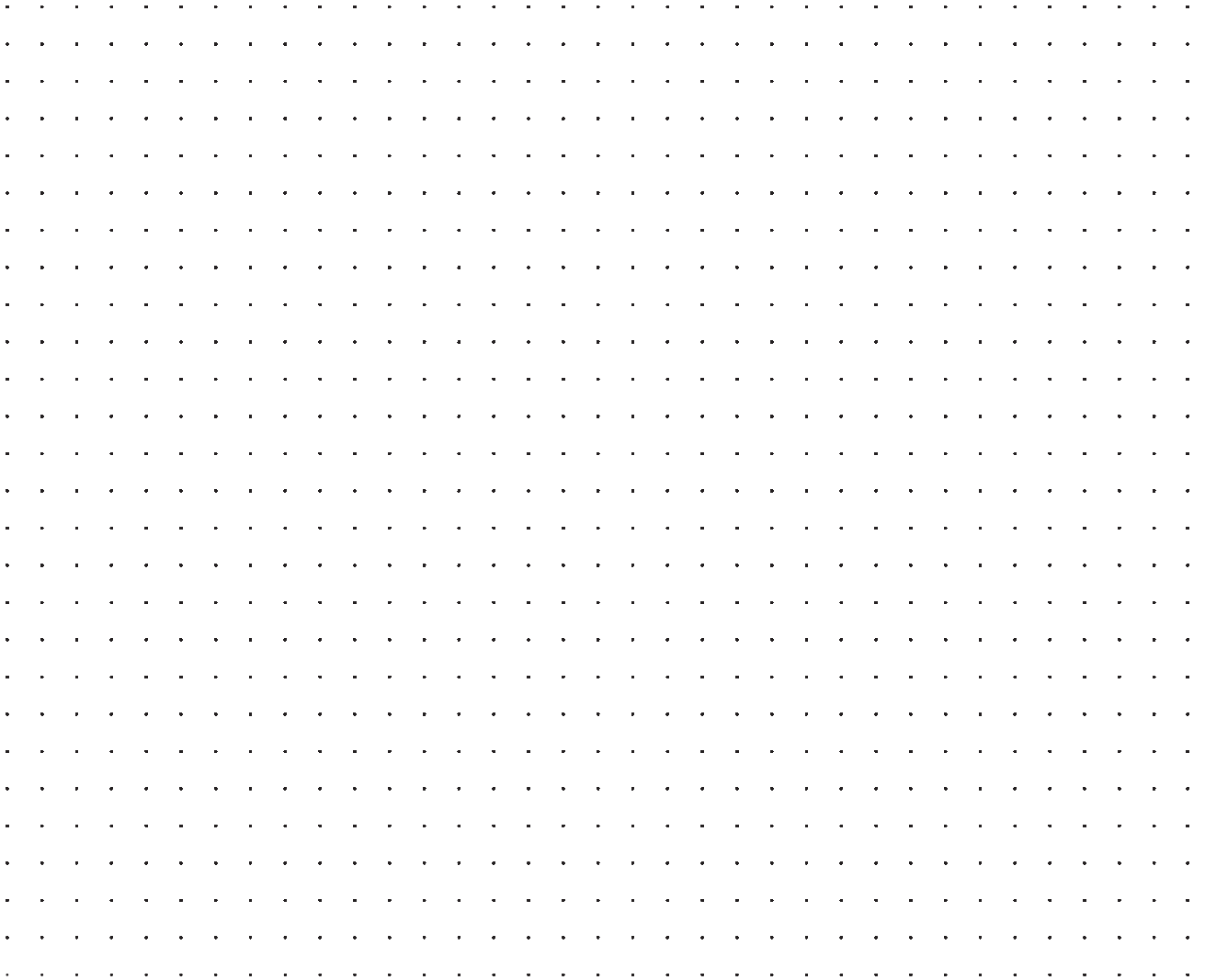




Securi-Flex

Creating Connections | Powering Possibilities

NOTES



Securi-Flex[®]

Creating Connections | Powering Possibilities



Creating Connections | Powering Possibilities

✉ enquiries@securiflex.co.uk
☎ 03333 44 66 23



Units 6 – 10 Mackley Ind. Est | Henfield Road
Small Dole | West Sussex | BN5 9XR | www.securiflex.co.uk